

versiondog

INFO

Version history

versiondog 4.0.0 onwards

© AUVESY GmbH

Last updated: 21 January 2024

AUVESY-MDT

Fichtenstrasse 38 B

D-76829 Landau

Germany

TOC

Version history	6
What's new in versiondog 9.8.7 (January 2024)	7
Our services at a glance	8
What's new in versiondog 9.8.6 (November 2023)	9
Our services at a glance	11
What's new in versiondog 9.8.4 (October 2023)	12
Our services at a glance	13
What's new in versiondog 9.8.2 (July 2023)	14
Our services at a glance	19
What's new in versiondog 9.7.2 (March 2023)	20
services:	21
What's new in versiondog 9.7.0 and 9.7.1 (March 2023)	22
services:	25
What's new in versiondog 9.5.4 (October 2022)	26
Our services at a glance	28
What's new in versiondog 9.5.1 (May 2022)	29
Our services at a glance	31
What's new in versiondog 9.1.0	32
A brief summary of our services:	39
What's new in versiondog 9.0.0	41
Comprehensive list on what's new in 9.0.0	41
A brief summary of our services:	45
What's new in versiondog 8.5.1 (April 2021)	47
Comprehensive list on what's new in 8.5.1	47

Summary of our services	49
What's new in versiondog 8.5.0 (February 2021)	51
Comprehensive list on what's new in 8.5	51
New in versiondog 8.1.0 (October 2020)	54
Listing of all new features in the 8.1.0 release	54
What's new in 8.1.5 (December 2020)	55
New in versiondog 8.0.x (July 2020)	56
Listing of all new features in the 8.0.0 release	56
New in versiondog 7.5.X (December 2019)	60
Issues resolved: 7.5.0	63
Issues resolved in versiondog 7.5.1	65
New in versiondog 7.0.x (September 2019)	66
List of what's new in this minor release 7.0.2	66
List of what's new in this minor release 7.0.1	66
General information concerning versiondog 7.0.0	66
List of what's new in this major release 7.0.0	66
Issues resolved: 7.0.2	71
Issues resolved: 7.0.1	72
Issues resolved: 7.0.0	73
New in versiondog 6.5.0 (November 2018)	75
Highlights	75
Full list of what's new in this major release:	75
New features & enhancements	75
New in system & device support	76
New in add-ons	76

Issues resolved: 6.5.0	77
Update: 6.5.1 (November 2018)	77
Update: 6.5.2 (March 2019)	78
New in versiondog 6.0.0 (Juli 2018)	79
Highlights:	79
Full list of what's new in this major release:	79
New features & enhancements	79
New in system & device support	79
New in add-ons	81
Update: 6.0.0.35882 (August 2018)	81
New in versiondog 5.5.0 (November 2017)	82
Highlights:	82
Full list of what's new in this major release:	82
New features & enhancements	82
New in system & device support	83
New in add-ons	86
Update: 5.5.0.33877 (March 2018)	86
New in versiondog 5.0.0 (Juni 2017)	88
Highlights:	88
Full list of what's new in this major release:	93
New features & enhancements	93
New in system & device support	95
New in add-ons	98
Update: 5.0.0.31159 (August 2017)	98
New in versiondog 4.5.0 (November 2016)	100

Highlights:	100
Full list of what's new in this major release:	103
New features & enhancements	103
New in system & device support	104
New in add-ons	106
New in documentation & information	107
Update: 4.5.0.26851 (December 2017)	107
New in versiondog 4.0.0 (July 2016)	108
Highlights:	108
Full list of what's new in this major release:	118
New features & enhancements	118
New in system & device support	119
New in add-ons	123
New in documentation & information	125
Discontinued from versiondog 4.0.0 onward	126
Update: 4.0.0.24072 (July 2016)	126
Update: 4.0.0.24244 (August 2016)	126
Update: 4.0.0.24664 (August 2016)	127

Version history

In this document, you can see a list of all the releases of the versiondog software, from version 4.0 onwards. Since 2016, there are two releases of the versiondog software per year.

For more information on the current plan for versiondog software concerning future versions, go to the Roadmap in the online help: [About versiondog -> versiondog Roadmap](#).

What's new in versiondog 9.8.7 (January 2024)

The following table represents the optimizations made in the current versiondog version.

System performance / stability

A stable and efficient software is vital and will be improved by these adjustments.

- Bug fix to ensure that all sub-processes are also terminated correctly when the VDogMasterService is terminated.
- Bug fix in the UserClient to ensure that it runs stably even when using JPEG icons for script buttons.
- Bug fix in ParallelServer to ensure that maintenance mode can be executed correctly.
- Stabilization of the ParallelServer to ensure that synchronization is carried out correctly.

Other

We have also conducted a number of additional changes to improve your user experience:

- Update of PostgreSQL in versiondog server to version 15.5.1.

Our services at a glance

Do you need support?



What's new in version dog 9.8.6 (November 2023)

The following table represents the optimizations made in the current version dog version.

Device integration and version control

We continuously improve the functionality and scope of supported devices / editors and have now integrated:

- Exception handling when deleting temporary files when comparing TIA Portal projects
- Fixed Siemens TIA portal: Compare in offline/online comparisons to only compare languages/texts that the PLC supports
- Fixed Siemens TIA Portal: Compare not detecting differences in non-symbolic addressing in logic networks under certain circumstances
- Fixed Siemens TIA Portal: Incomplete symbolic names
- Fixed Siemens S7: Compare crash related to jump marks
- Parallel uploads of RSLogix 5000 jobs on the same machine no longer supported. To scale the upload, you need to have multiple agents on different machines
- Error corrected when comparing Rockwell RSLogix 5000 projects
- Error corrected when comparing RSLogix 500 projects so that "false positives" are not displayed
- Error corrected for graphical comparison of Rockwell RSLogix 5000 projects
- Error corrected when comparing Omron CX Programmer projects
- Error corrected when comparing Omron Sysmac Studio projects so that differences in EtherCAT nodes are displayed correctly
- Removed Omron CX Programmer Perl interpreter
- Fixed Siemens WinCC upload failing if the database name contains hyphens
- Fixed Beckhoff TwinCAT compare not detecting differences in safety in ports. Added Beckhoff TwinCAT compare safety CRC
- Improved logic network comparisons for RSLogix 5000

- Fixed CODESYS 2 project export to correctly pass credentials to the editor on modern Windows systems
- Exception handling for JSON comparison
- Exception handling for ASCII comparison
- Error corrected when comparing Scalance switches
- Error corrected when comparing EPLAN projects

Ease of use / interface

For a simpler and more secure handling of and access to information, we have improved the user interface.

- Adjustment of the description text for the **Maintenance mode** button
- Possibility to hide settings in the **AdminClient** via INI entries

System performance / stability

A stable and efficient software is vital and will be improved by these adjustments.

- Error corrected in the export module in relation to special characters
- Improved the security of server-client communication
- Error corrected when storing device information in the database using an upload agent
- Error corrected when swapping out versions via the Archive Manager
- Error corrected during job execution
- Error corrected during server synchronization
- Error corrected in the job configuration interface
- Error corrected in the ReportClient
- Adjustment to AdminClient so that only administrators can create a support package
- Various 3rd party libraries updated
- libcurl.dll removed from installation directory and HowTo created on how to remove libcurl.dlls from older versions

Our services at a glance

Do you need support?



What's new in versiondog 9.8.4 (October 2023)

The following table represents the optimizations made in the current versiondog version.

OTHER

We have also conducted a number of additional changes to improve your user experience:

Important security update:

- Update to libcurl version 8.4.0 to fix high severity issue in the 3rd party library libcurl, CVE-2023-38545; Link: [CVE - CVE-2023-38545 \(mitre.org\)](#).



We strongly recommend you perform the update as soon as possible to close the vulnerability.

Our services at a glance

Do you need support?




What's new in versiondog 9.8.2 (July 2023)

The following table represents the optimizations made in the current versiondog version.

Setup, Migration and Update

The latest changes increase the stability and efficiency of the update / migration of the server system.

- Updating the database version to PostgreSQL 15:
 - Updating the server and the **BackupClient**
 This means that the server and the **BackupClient** can now only run on 64bit systems (newer than Windows 7).
Official release from Windows Server 2019 and Windows 10 V2.
 - Adaptation of third-party libraries (incl. OpenSSL 1.1.1t).
 - Extended information output during setup.
- Stabilization of client migration to perform better exception handling.
- Stabilization of database migration from Firebird to PostgreSQL.
- Bugfix for agents SmartUpdate.

Device integration and versioning

We are continuously improving the functionality and range of supported devices / editors and have now integrated the following editor:

- ABB Robots: New component type
- CODESYS V3: Supported upload
- FTP upload:
 - Adaptation to the job configuration with regards to the use of symlinks
 - Bugfix to enable the use of additional characters in path names
- GE Proficy project data: Bugfix for comparison
- Ladder Logic networks: Improved line drawing
- Logic networks: Improved before and after recognition
- Mitsubishi GX Works2: Improved error warning during comparison

- Mitsubishi GX Works3: Improved exception handling when opening the project tree
- Omron CX Programmer:
 - Improve exception handling when comparing to increase system stability
 - Bugfix for comparison of programs with protected function blocks
- Rockwell FactoryTalk View 11: Bugfix for comparison to ensure that adjustments to images are recognized
- RSLogix 5000:
 - Support for V35
 - Bugfix for the comparison display
- Schneider EcoStruxure Control Expert: Support for V15.3
- Siemens Simatic S7: Bugfix for comparison to ensure that the structure of data blocks is correctly reproduced
- Siemens Simatic WinCC: Optimization of database backups
- Siemens TIA Portal:
 - Optimization of standard library management
 - Improve upload stability through optimized communication to the device
 - Bugfix when comparing TIA V17 projects. This ensures that changes to the gateway address are also detected
 - Optimization of the comparison configuration. This ensures that individual variables can be included or excluded during comparison
 - Improved error warning when handling TIA Portal Editor
 - Adjustment to the comparison. This ensures that differences in remanence are also detected
 - Bugfix for configuring the comparison when H-CPU's are integrated

User management


It is important for administrators to be able to manage their users efficiently and intuitively. This ser-

vice has now been improved.

- Optimised LDAP connection: Adjustments to the group membership for users. This can now be applied correctly.
- Improved handling of users to increase security.

Usability/Interface

Easier and safer handling or access to information. The interface has been adapted.

- **ExportModule**
 - Extension of automatic export to export data within a specified time window
 - Bugfix for missing export AssetState
 - Adaptation to the format for UserManagement, ComponentTypes and ComponentTree exports
 -  This has changed the structure of the exports. For customer-specific solutions, appropriate readaptation may be required.
- VDogGateway: Adjustment to installation configuration templates
- **Image Service**: Improved notification message when using **Image Service** jobs
- Active Directory:
 - Optimized error message when a blocked user tries to log into the Active Directory
 - Security adjustment for authentication
- Parallel server: Optimization of the user interface when creating a support package in the parallel server network
- **ReportClient**: Bug fix to ensure that version timestamps are displayed correctly
- Job configuration:
 - Bug fix to ensure that the execution status is displayed correctly even if the job is executed using an agent (Upload and Compare)
 - Bugfix for the display
- Agents:

- Update bug fix to ensure that the warning message is displayed correctly for the supported operating systems
- Agent Setup: Correction to text display
- **LibraryManagement**: Bugfix when checking S7 400 data

System performance/ Stability

A stable and efficient software is the be-all and end-all for us and has been improved by the following adjustments:

- Increased system stability and performance when exporting job results
The export does not time out even with larger amounts of data and can now also be exported as a JSON file.
- Stabilisation of existing connection to Claroty
- Performance of an external pentest by Outpost24 completed with positive results.
- Performance optimization of the **MasterService** so that it now starts faster.
- Stabilization of Job configuration: Longer job titles may also be used.
- Drive Snapshot: Update so that special symbols can also be used in FTP passwords.
- Elimination of dependency on Microsoft DirectX 11 to simplify the installation process
- Parallel server:
 - Stabilization of **AdminClient** display
 - Stabilization of synchronization process during the synchronization of the components
- Stabilization of Check-Out process so that it works even with a slow network connection
- AutoCheckOut: Backups can be checked out again
- Stabilization of the internal security handling, so that the versiondog server runs properly even on slower host systems
- Increased system stability when displaying certain job results
- Improve data handling in debug logs
- Improved security mechanisms on the server system during job configuration

- Server synchronization:
 - Bug fixing to ensure the exchange of component type information is performed more stably
 - Improved exception handling when users with different IDs are deployed
 - Bugfix to ensure that synchronization job results are displayed correctly
- AutoCheckIn: Bug fix so that umlauts in the version identifier can be handled
- **Image Service**: Bugfix when running via an agent

Other

We have also made adjustments in other areas to improve your user experience.

- Continuation in modernizing the versiondog server
In connection with this, the license format was changed from *.bin to *.json. With this release, only JSON license files can be imported via the **Licensing** dialog.
The information output in the dialog has been adapted accordingly.
- Adjusting the usage information exported from the server to include anonymized client information.
- Bugfix in the **Licensing** dialog so that the product version is displayed correctly.
- Exception handling when collecting asset information transferred to AUVESY-MDT if the corresponding option is enabled in the **AdminClient**.
- Improved handling of temporary user information to increase product security.
- Parallel server: Increased stability for the **System Dashboard** in the **AdminClient**.

Our services at a glance

Do you need support?



What's new in versiondog 9.7.2 (March 2023)

The following table displays the optimizations that have been made in the current versiondog version.

System performance /stability

A stable and efficient software is vital and will be improved by these adjustments.

- Bug fixing during SmartUpdate of agents
- Stabilization of job configuration so that longer job names can be used
- Bug fixing in server synchronization so that the exchange of component type information is performed more stably

services:

Do you need support?



AUVESY CONSULTING

[Find out more](#)

Last updated: 22 November 2023

What's new in versiondog 9.7.0 and 9.7.1 (March 2023)

The following table displays the optimizations that have been made in the current versiondog version.

Device integration and version control

We continuously improve the functionality and scope of supported devices / editors and have now integrated:

- Beckhoff TwinCAT: Optimization of upload so that empty directories can be compared.
- Cognex In-Sight: Exception handling when uploading with SD cards.
- COPA-DATA zenon:
 - Support for version 10.
 - Exception handling when creating versions or comparing projects.
- FANUC CNC: Exception handling when comparing.
- FTP:
 - Optimized upload so that recursive symlinks are followed only once.
 - Exception handling when uploading empty files via FTP.
- GE Proficy: Improved upload so that assets, that do not have object properties, can be backed up.
- Rockwell RSLogix 5000: Support for version 34.
- Schneider Electric EcoStruxure Control Expert: Support from version 15.1 & 15.2
- Siemens TIA Portal:
 - Support for version 18.
 - Optimization when comparing changes in outputs for blocks in TIA Portal projects.
 - Exception handling when comparing the device configuration of TIA Portal 15.1.
- Universal Workflow: the module **component type editor** is issued with an additional table. This can be used to set how to unzipt zipped projects and archives.

Ease of use / interface

For a simpler and more secure handling of and access to information, we have improved the user interface.

- Error in the web server when sorting (by Job name or Upload type) in the job list area rectified.
- Changes made to server display in the client to ensure that the correct server name is displayed.
- Additional license information in the **license activation** dialog added, making it easier to assign a system ID to the customer.

System performance / stability

A stable and efficient software is vital and will be improved by these adjustments.

- Increased system stability when auto-exporting job results. The export does not time out even with larger amounts of data.
- Increased system stability when viewing certain job results.
- Database migration to PostgreSQL finalized. This means that Firebird database is no longer used on the server but on the client.
- Changes made to **Archive Manager** to achieve stable offloading of data and information using PostgreSQL databases.
- Bug fix for server synchronization to ensure that, even with special configurations, the process can still be performed successfully.
- Bug fix in **BackupClient** to ensure that it no longer crashes in exceptional cases when logging in for the first time.

Other

We have also conducted a number of additional changes to improve your user experience.

- Improvement to internal debugging output to simplify root cause analysis of license issues.
- Update to the used third-party libraries in the program directory.
- Fixed issue in which an "OWASP CSV Injection" could be used on a CSV export.
- Client information will no longer be included in the usage information exported from the

server for security reasons.

- BackupClient: Synchronization with the server also possible without administrator rights.

services:

Do you need support?



AUVESY CONSULTING

[Find out more](#)

Last updated: 22 November 2023

What's new in versiondog 9.5.4 (October 2022)

The following table lists the new features of the current versiondog version.

Setup, migration, and update -- The latest changes increase the stability and efficiency of the server system update and migration process:

- Information regarding migration process (during server update) will not be written in the file "migration_result.txt", but into a separate log-file.
 - vdServerArchive\VD\$A\Logs\Debug\VdogMigration.log
- Fix of occasional migration problems in the database "Component.fdb"
- When navigating installation options (Server installation, Server + Client, etc.) in the setup, a bug in the setup was triggered. This has been remediated.
- Rights regarding program directory and archive will now be assigned correctly during setup.

Device integration and version control -- We continuously improve the functionality and scope of supported devices / editors and have now integrated:

- Schneider EcoStruxure Control Expert V15.1

User management -- For System Administrators it is vital to manage their Users efficiently and intuitively. This service has now been improved:

- Bug fixing in User Management, such that blocking of a user account after inactivity can be reversed by the Administrator now.

Ease of use / interface -- For a simpler and more secure handling of and access to information, we have improved the user interface:

- In the System Dashboard it is now easier to differentiate between Single Server and Parallel Server.
- The event log of the Server System now displays full information instead of cutting it off.
- Texts in the setup have been adjusted to ensure correct display.
- Introducing a central upload page for
 - Usage information of the Server System
 - Asset information of the stored components

- Change of workflow for displayed admin messages. Admins can send information to the Clients, which will then be displayed. In the future, this workflow will prohibit a direct opening of displayed links, and thus prevent harmful code to be executed. Instead, users can now copy the link and view it before executing it.

Database -- To effectively and easily use your system, we have improved the way the database communicates in the background:

- Adjustments in database communication in the background.

System performance / stability -- A stable and efficient software is vital and will be improved by these adjustments:

- Stability of the BackupClient has been improved, such that a change in languages is now easier.
- Improved interface between Server System and Claroty, such that Server System will not be blocked.

Other -- We have also conducted a number of additional changes to improve your usage experience:

- Improved synchronization between BackupClient and Server System, such that serial number and license are now transferred correctly.
- Link of online help now leads to Home - <https://my.auvesy-mdt.com/home.html>
- Communication between Client and Server System has been improved in the area of scripting to reduce the risk of “man-in-the-middle-attacks”.
- Adjustment of file names for the detailed log-files to remove the suffix „.exe“.

Our services at a glance

Do you need support?



What's new in versiondog 9.5.1 (May 2022)

The following table lists the new features of the current versiondog version.

General	
Introduction of a new database system	
Breaking changes	
<ul style="list-style-type: none">• A new port will be required (64023)• versiondog 9.5.1 is not compatible with the automation solution center.• The format of import/ export of component types has been changed to JSON.• The CSV export in the user management does not include the possibility to change passwords.• To be able to log in locally with a client, the user must have previously logged in once to the server.	
Features	
Easy Asset Integrator	<ul style="list-style-type: none">• Configuration of global job parameters (address, user name, password) now possible• Automatic extraction of a zipped source data directory• Creating a template from an existing structure (project tree)• Configuration of who is allowed to use the Easy Asset Integrator (administrator function).
Data protection	<ul style="list-style-type: none">• Display of user-defined information in client applications (for example, confidentiality level)• Display of user-defined information in PDF exports (for example, confidentiality level)• Anonymization of deleted users
Add-ons	
Export module	<ul style="list-style-type: none">• General optimizations (stability, etc.)

	<ul style="list-style-type: none"> • Export of Event Log • Export of Admin Log
Image Service	<ul style="list-style-type: none"> • Support for SFTP
Device & Software Support	
Mitsubishi GXWorks 3	Improved comparison
Omron CX Programmer	Supported Backup
Omron Sysmac Studio	Support in creating versions, comparison and backup
RSLogix 500	Support for version 11
SIMATIC PCS7 7	Support for version 9.1
SIMATIC STEP 7	Support for version 5.7
Siemens TIA Portal	<ul style="list-style-type: none"> • Hardware recognition • V17 Station upload with secure password • Improved comparison • Hardware comparison (MAC Address) • V17 Security Token replaced

Our services at a glance

Do you need support?



What's new in versiondog 9.1.0

The following table contains a summary of features that were included in the versiondog 9.1 release.

Administration		
	Parallel server	Optimized path dependencies
VDog MasterService	Transfer existing server settings during versiondog update	
	versiondog server	Improvements to login and performance
New in system and device support		
	ABB robots	Update to ABB SDK
BECKHOFF TwinCAT 3	Read out TwinCAT version prior to upload	
COPA-DATA zenon 8.2	Automatic creation of versions in zenon now prevented	
	RSLogix 5000	Timeout for comparisons extended (now 300 seconds)
	Siemens SIMOTION	Resolved issue relating to incorrect path transfer
	Siemens SINUMERIK (Power Line & Solution Line)	Active job parameters now displayed
	Siemens TIA Portal 14 SP1	Comparisons optimized
	Switches	Storage strategy optimized

Add-ons		
	AUVESY Image Service	<p>The following issues have been resolved:</p> <ul style="list-style-type: none"> • Resolved issue relating to proxy settings that prevented an upload from being carried out • Resolved issue relating to psexec authorization

The following table contains a summary of features that were included in the versiondog 9.0 release.

Administration		
	Setup	Changes to icon design will occur after SmartUpdate
	Parallel server	<ul style="list-style-type: none"> • Email notification concerning Check-In / Check-Out will now only be sent by one server • Improved synchronization behavior between servers

	Email log	Display UTC and local timestamp
Upload		
	FTP upload	Uploads can be carried out without a password
	Switch support	Optimized error search for uploads
Client applications		
AdminClient	Job configuration <ul style="list-style-type: none"> • Create jobs to which you have applied a filter • Increased maximum execution time for reattempts in case of an error 	
	UserClient	Component overview <ul style="list-style-type: none"> • Sorting adjusted
New in system and device support		
	ABB Omnicore	Version control, backup & compare
	AVEVA	Wonderware component type changed to AVEVA
	AVEVA (Schneider Electric) CITECT SCADA	<ul style="list-style-type: none"> • Usability & compare function optimized • Compare system pages within a CITECT SCADA project
	AVEVA System Platform	Support for new editor version of System Platform

		2020. Version control, backup & disaster recovery
	B&R Automation Studio	Compare function optimized
	BECKHOFF TwinCAT	TwinCAT V3 integrated. Compare & upload functions optimized
	Cognex In-Sight	Upload function optimized
	COPA DATA zenon	Support for editor version 8.2
	FANUC Robot	Upload function optimized
	GE Proficy	Compare function optimized
	Rockwell FactoryTalk View	Compare function optimized
	Rockwell RSLogix 5000	Support for editor version V33
	Schneider EcoStruxure Control Expert	<ul style="list-style-type: none"> • Improved usability. Password support for security editor • Support for editor version V15
	SEW MOVITOOLS	Compare function optimized
	Siemens SIMATIC Startet/Scout:	<ul style="list-style-type: none"> • Compare optimized • Support Starter-/Scout Version 5.4 in SIMATIC S7 projects
	Siemens SIMATIC STEP 7	Compare function optim-

		ized
	Siemens TIA Portal	<ul style="list-style-type: none"> • From TIA Portal V16: Read project language for the upload • Non-relevant hardware differences reduced • Station upload: Debug mode • Monitor actual values in data blocks • Support for TIA Portal V17
	Siemens WinCC	Upload optimized
Add-ons		
	Agents	Disk space optimized. Default deletion of unnecessary Archive.zips
	Asset Inventory Service	Identify, manage, and analyze your OT asset inventory
	AUVESY Image Service	<ul style="list-style-type: none"> • Adjust transfer speed settings (LimitIORate) • Image options expanded to include differential images • Option to encrypt created images

	Easy Asset Integrator	Simplified component import and job creation
	ExportModule	<p>Improvements:</p> <ul style="list-style-type: none"> • Generate output of various reports in JSON format • Generate output of email recipients regarding job execution • Configurable CSV separator • Export data taken from component log • Export linked components (for example, when using LibraryManagement) • Export JobList: General improvements • Export JobResults: Display information concerning errors and warnings • Export UnequalJobResults: Expanded to include additional information (NextStart,

		<p>JobStart, JobFinish, TimeStamp Backup, TimeStamp PreBackup)</p> <ul style="list-style-type: none"> • Filter based on number of days now possible for large exports • Log exports: Now possible to generate output of differences, up to the last export • Time output in global format (standard format is based on ISO 8601) • UTC / local timestamps available for exports
Product:		
	automation solution center	New web-based control center

A brief summary of our services:

Do you need support?



AUVESY CONSULTING

[Find out more](#)

Do you need support?



AUVESY UPDATE SERVICE

[Find out more](#)

Do you need support?



AUVESY JOB SERVICE

[Find out more](#)

Do you need support?



IMAGE SERVICE
INTEGRATION

[Find out more](#)

Do you need support?



VERSIONDOG TIA PORTAL
INTEGRATION

[Find out more](#)



What's new in versiondog 9.0.0

Comprehensive list on what's new in 9.0.0

Setup

- Icon design changes after SmartUpdate

versiondog parallel server

- Email notification concerning Check-In / Check-Out will now only be sent by one server
- Improved synchronization behaviour between servers

Emails

- Email log: Display UTC and local timestamp

Uploads

- [FTP upload without a password possible](#)
- Support for switches: Optimized error search for uploads

Client applications

AdminClient

Job configuration

- Create jobs to which you have applied a filter
- Increased maximum execution time for reattempts in case of an error

UserClient

- Component overview: Sorting adjusted

New in system and device support

ABB Omnicore

- Version control, backup & compare

AVEVA

- Component type Wonderware changed to AVEVA

AVEVA (Schneider Electric) CITECT SCADA:

- Usability & compare optimized
- Compare system pages within a CITECT SCADA project

AVEVA System Platform

- [Support for new editor version of System Platform 2020, version control, backup, and disaster recovery](#)

B&R Automation Studio

- Optimized SmartCompare

Beckhoff TwinCAT

- Integration TwinCAT V3: Compare and upload optimized

COGNEX In-Sight

- [Upload optimized \(In-Sight SDK integrated\)](#)

COPA-DATA zenon

- [Support for editor version 8.2](#)

FANUC robot

- Upload optimized

GE Proficy

- Compare optimized

Rockwell FactoryTalk View

- Compare optimized

Rockwell RS Logix 5000

- [Support for editor version V33](#)

Schneider EcoStruxure Control Expert:

- [Usability improvements: password support for security editor](#)
- [Support for editor version V15](#)

SEW MOVITOOLS

- Compare optimized

Siemens SIMATIC Starter/Scout:

- Compare optimized
- [Support for Starter/Scout Version 5.4 in SIMATIC S7 projects](#)

Siemens SIMATIC STEP 7

- Compare optimized

Siemens TIA Portal

- From TIA Portal V16: read project language for the upload
- Non-relevant hardware differences reduced
- [Station upload: debug mode](#)
- [Monitor actual values in data blocks](#)
- Support for TIA Portal V17

Siemens WinCC

- Upload optimized

New in add-ons

Agents

- Disk space optimization: default deletion of unnecessary Archive.zips

Asset Inventory Service

- [Identify, manage, and analyze your OT Asset Inventory](#)

AUVESY Image Service

- [Adjust settings for transfer speed \(LimitIORate\)](#)

- [Image options expanded to include differential images](#)
- [Option to encrypt created images](#)

Easy Asset Integrator

- [Simplified component import and job creation](#)

ExportModule: Improvements

- [Output of various reports also in JSON format](#)
- Output of recipients of emails regarding job execution
- Configurable CSV separator
- Export information taken from component log
- Export linked components (for example, when using LibraryManagement)
- Export JobList: expanded
- Export JobResults: display information concerning errors and warnings
- Export UnequalJobResults: expanded to include additional information (NextStart, JobStart, JobFinish, TimeStamp Backup, TimeStamp PreBackup)
- Filter based on number of days now possible for large exports
- Log exports: output of differences up to the last export possible
- Time output in global format (standard format based on ISO 8601)
- UTC / local timestamp available for export

New products

automation solution center (asc)

- New web-based control center

A brief summary of our services:

Do you need support?



AUVESY CONSULTING

[Find out more](#)

Do you need support?



AUVESY UPDATE SERVICE

[Find out more](#)

Do you need support?



AUVESY JOB SERVICE

[Find out more](#)

Do you need support?



IMAGE SERVICE
INTEGRATION

[Find out more](#)

Do you need support?



VERSIONDOG TIA PORTAL
INTEGRATION

[Find out more](#)



What's new in versiondog 8.5.1 (April 2021)

Comprehensive list on what's new in 8.5.1

Security

- Update OpenSSL from 1.1.1j to 1.1.1k (security update from 25.03.2021)

versiondog server

- Entry in event log when maximum number of simultaneous uploads is reached and the current job is blocked as a result.
- Optimized handling of disconnections, which could otherwise lead to database error messages in certain scenarios.

Client application

UserClient

- Optimized handling of large number of components

New in system and device support

EPLAN Electric P8

- [Basic functionalities in versiondog: version creation, upload & compare](#)

GE Proficy ME

- Optimized SmartCompare & Upload

Json

- Comparator configuration: Usability improvements

Microsoft Word

- Optimized comparison for signed documents

Rockwell FactoryTalk View ME/SE

- Optimized SmartCompare

Rockwell RSLogix 5000/Studio 5000

- Optimized SmartCompare and save management

Schneider Electric SoMachine

- Optimized SmartCompare

Siemens SIMATIC Route Control for PCS7

- [Basic support in versiondog: version creation, upload & compare](#)

Siemens TIA Portal

- Job configuration: Optimized job loading times
- Software upload: Corrected ending of upload in versiondog when aborting upload process in TIA Portal
- Upload: Optimized identification and verification of the IP address
- Upload: Read fingerprints only when using feature "Execute station upload only if..."

New in add-ons

Job-trigger via OPC UA

- Username/password authentication possible

Summary of our services

Do you need support?



AUVEZY CONSULTING

[Find out more](#)

Do you need support?



AUVEZY UPDATE SERVICE

[Find out more](#)

Do you need support?



AUVEZY JOB SERVICE

[Find out more](#)

Do you need support?



IMAGE SERVICE
INTEGRATION

[Find out more](#)

Do you need support?



VERSIONDOG TIA PORTAL
INTEGRATION

[Find out more](#)



What's new in versiondog 8.5.0 (February 2021)

Comprehensive list on what's new in 8.5

versiondog setup

- versiondog setup provided as MSI package (on request)

Client applications

- Optimized registration of domain users for transitive trust positions

Check-In and Check-Out

- Improved database transfers
- [Optional email notifications](#)
- [Check-Out: email notifications only sent when component is locked](#)

Jobs

- [Configurable timeout via GUI pro upload class](#)
- Email notification containing summary of job results
- Fix: versiondog does not crash during synchronization of job results database on a remote share.

UserClient

- Issue with high CPU usage fixed
- Start versiondog via a web link

Features, functions, and workflow

- Scheduler: scheduler that has been slowed down by slow clients corrected

New in system & device support

ABB Robots

- Integration of new ABB robot SDK Upload now possible without FTP (if the robot supports this)

AVEVA System Platform

- [Upload via "Galaxy Backup Utility"](#)

AVEVA InTouch

- AVEVA InTouch 2017 SP2 editor supported

B&R Automation

- Upload of English versions

GE Proficy ME

- [Optimized treatment of actual values](#)

Hirschmann switches Eagle30 / Eagle One

- [SmartCompare & Upload](#)

MITSUBISHI GX Works2

- Optimization of variable synchronization

JSON files

- New component type with comparator

Omron CX Programmer

- Graphical comparison

Rockwell RSLogix

- Communication path automatically selected

Sick SOPAS ET

- [Comparator settings adjusted to exclude specific variables](#)

Siemens TIA Portal

- [Optimization of station uploads](#)
- [Upload: exclusion of SCL sources from comparison](#)

New in add-ons

AUVESY Image Service

- [Create a list with the installed software on a client](#)

Agents

- Configuration: Enter a unique designation and improved search and sort
- [Optimized identification when multiple agents are in use that have the same IP addresses](#)

Do you need support?



AUVESY UPDATE SERVICE

[Find out more](#)

New in version dog 8.1.0 (October 2020)

Listing of all new features in the 8.1.0 release

Client applications

- Optimized version dog design: improved contrast
- Security and stability improvements regarding client-server communication

UserClient

- Show the size of the archive.zip and the uncompressed size in UserClient

Features, functions and workflow

Error resolved: for certain OS server crash

Update OpenSSL 1.1.1g to 1.1.1h

New in system & device support

Phoenix Contact Managed switches

[Integration of 2000 series switches](#)

Siemens TIA Portal

- Checksum comparison – optimized processing of excluded controls
- Siemens TIA Portal: improved detection of changes to Safety Timer

SEW-EURODRIVE MOVITOOLS® MotionStudio

Jobs – timeouts adjusted

Schneider EcoStructure Control Expert

[Support for V14.1 \(Unity Pro\)](#)

What's new in 8.1.5 (December 2020)

Stability and security improvements

Minor bug fixes

New in version dog 8.0.x (July 2020)

Listing of all new features in the 8.0.0 release

Client applications

UserClient

- Configurable notification of completed Check-In and Check-Out procedures

AdminClient

- Job configuration: E-mail addresses of the users to be notified are now displayed
- [Starting jobs via OPC interface](#)
- [Email notification for jobs now possible to any email address](#)
- Email notification: Job name and component including path are now displayed in the e-mail subject

Features, functions and workflow

- **Changed component properties during comparison now displayed**
- [Introduction of Multi-User Editing projects](#) Improved edition of shared projects on external working directories
- **New versiondog GUI (improved appearance and performance)**
- **Increased data transfer speed during Check-In and Check-Out procedures**
- **Increased data transfer speed for Check-In and Check-Out of components containing blocks from standard libraries**
- **Improved creation for support package: BAK and FT files are now excluded**

New in system & device support

64bit comparator for Excel, Siemens TIA Portal and AVEVA (formerly Wonderware) System Platform

Acronis

Support for f parameter to pass any options / arguments onto Acronis

B&R Automation Studio

Possible crash now preventable if a file set to be copied already exists

KUKA KRC 4

Improved upload

Enhancements to GE Proficy Machine Edition

RSLogix 5000

- Improved timeout and file access
- Create job even without a base version

Scalance Switches

Optimized output for error messages

Schneider Unity Pro

- [Password protected projects can now be compared / saved](#)
- Checksum comparison now available when function Memory protect activated

Siemens Simatic S7

- [Exclusion of current values from data block variables](#)
- Improved recognition of moved / renamed projects inside a component

Siemens TIA Portal

- Explanatory error message if TIA Portal is not installed
- Device type ET200pro/15xx and SIPlus now added to whitelist for station upload
- Manual selection of the interface when comparing checksums
- [Support for TIA Portal and Openness V16](#)

CODESYS 3.5 SP15 / SP16 now supported

FactoryTalk View 11 now supported

FANUC CNC 16i / 18i now supported

[Hirschmann Switches HiOS \(RS-, MS-, RSR-, ...Series\) now supported](#)

Hirschmann Switches Classic Switch Software (RSP-, RSPE-, MSP-, RED-, ...Series) now supported

[Mitsubishi GxWorks3 \(IQWorks\) now supported](#)

[Schneider Unity EcoStruxure Control Expert now supported](#) (previously known as Schneider Unity v14)

[Siemens Scalance S615, XF-2xx, XR-3xx now supported](#)

[WAGO e!cockpit: versioning and comparison now supported](#)

[AVEVA \(formerly Wonderware\) InTouch 2017 now supported](#)

[AVEVA \(formerly Wonderware\) System Platform 2017 Update 3 SP1 now supported](#)

Word/Excel: files with ~\$ now excluded from comparison

AVEVA (formerly Wonderware) System Platform

- Improved error message for corrupt project data
- Optimized memory requirements
- Improved handling of pseudo differences
- Improved handling of aaPKG files

New in add-ons

AUVESY Image Service

- HDD selection improved
 - Entering different admin share at job level now possible
 - Temporary data storage now configurable per job
 - Simplification of manual service installation
 - Introduction of a tool for creating a bootable USB stick
 - Additional, local storage location for images
-

New in version dog 7.5.X (December 2019)

Client applications

UserClient

- Implementation of improved activity monitor, for example for Siemens TIA Portal, BECKHOFF TwinCAT 3, CODESYS
- Supplier check-out only possible into an empty directory

AdminClient

- [Automatic release of AdminClient modules when user goes inactive](#)
- [Automatic email configurable depending on job](#)
- [Option to automatically create a new version after job execution](#)
- Dashboard extended to display Image Service licenses
- Email log extended by time stamp
- Dashboard display optimised when internet connection errors occur

Features, function and workflow

- **Command line calls**
 - Update to AutoCheckIn: notification on unversioned changes and supported tags
 - Comments assigned to users included in autoexport
- **Improved range of error warnings. WinCC SQL instance still missing**
- **Optimisation of performance when checking out a component with an external working directory**
- **Support package: adminlogin data can now be excluded**
- **User interface now available in Polish**
- **Improved data bank migration when carrying out a versiondog update**

New in system & device support

Integration of Control Expert (Control Expert V14.0 is the new name for Schneider Unity 14, Control Expert is part of the suite: EcoStruxure Control Expert V14.0)

Enhancements to GE Proficy Machine

- Improvement to comparator configuration
- PLC components option now configurable
- [Selecting a Target from a job is now possible](#)

Optimised RSLogix5 and RSLogix 500

- Support for password protected projects

Optimised Siemens S5

- Support for Upload with S5-lan++ module

Optimised Siemens TIA Portal

- Wide range of slight differences
- Station Upload improved with TIA Openness

Optimisation to upload class Disk Image

Optimisation WinCC flexible

- Possible to use local DB instead of SQL

Support from Schneider PL7 Pro

New in add-ons

- **Ongoing development of AUVESY Image Service**
- **Ongoing development of Export module (based on AUVESY User Conference feedback)**

New detailed report on display of job results

- **versiondog scripting**

New script event "OnUcOpen"

Issues resolved: 7.5.0

The following points have been addressed in this update:

Device errors/ application functionality errors

- **Disk Image:** Job reports the error: directory could not be created
- **GE Proficy ME:** errors when carrying out a comparison: instructions are produced incorrectly/ upload of individual **targets**/ redundancy PLCs were not supported (comparison)
- **RSLogix 5000:** Possible crash when comparing Backup <-> Version / Check, when uploading, whether an editor was active or not, was not correct
- **Schneider Citect SCADA:** Potential for slight differences
- **Siemens S5:** Function open editor was no longer available after update with versiondog 7.0.X
- **Siemens S7:** Potential errors when creating a version of a component
- **Siemens Simotion:** Under certain circumstances, the comparison would not show all differences
- **Siemens TIA Portal:** Devices in groups could not be opened in the project tree / groups with subgroups was not be displayed correctly in the difference tree/ potential slight differences
- **Siemens SIMATIC WinCC:** Possible crash when creating a version without an editor / error warning when editor was missing
- **Siemens SIMATIC WinCC flexible:** Potential errors when creating a version of a component
- **Wonderware InTouch:** Possible SQL error when checking-in a project
- **versiondog UserClient:** UserClient sporadically crashes if you changed the lock state / incorrect progress display during upload and comparison in UserClient /under certain circumstances a job was shown twice in the daily report

Error caused by unicode changes

- Various database migration errors due to corrupt databases or unexpected coding of content
 - VDog MasterService: Licence check: Special characters in the XML lead to errors
 - Database migration would terminate if the name of the ClientArchive contained spaces.
 - Special characters prevented Check-In from Schneider Concept Project
 - SmartUpdate: If there was a file with no ASCII characters (for example, Delete.txt) in the setup release directory, errors would occur.
 - Cognex In-Sight job could not be saved under certain circumstances
 - Projects with special characters in path and DBase database could not be opened
 - Siemens SINUMERIK 840D Operate: It was not possible to make a version under certain circumstances
 - Users with @ in user name could cause problems during import
 - Database migration to UTF-8 was not robust enough against virus scanners or other external influences
 - Siemens S7: Potential F block error with the update to 7.0.1
 - Siemens S7: Potential for slight differences
 - Display problem with umlauts when displaying job results
 - Possible SQL error when sending emails daily
 - Create and Check-In the base version: Process could take longer since version 7.0
 - Incorrect display of tags added with versiondog AutoCheckIn
 - The creation of a support package could fail under certain circumstances with an error message
-

Issues resolved in version dog 7.5.1

The following points have been addressed in this release:

- **Issue resolved:** in slow network environments, problems may have occurred when executing jobs via agents due to TLS implementation
 - **Issue resolved:** archived files incorrectly contained the file attribute "temporary"
 - **Issue resolved:** under certain conditions data base migration ended in an error
 - **Improvement:** improved version dog log function
 - **Improvement:** Schneider PL7 Pro
 - Changes to component type path
 - Header date leads to unwanted changes
 - **New device support:** FANUC CNC 16i/18i
-

New in version dog 7.0.x (September 2019)

List of what's new in this minor release 7.0.2

This release mainly focused on bugfixing. For more information, see [Issues resolved: 7.0.2](#)

List of what's new in this minor release 7.0.1

In this release, we have primarily focused on providing bugfixes. For more information, please refer to [Issues resolved: 7.0.1](#)

General information concerning version dog 7.0.0



We have improved support for Unicode. Please be aware of the following:

- Updating to version dog 7.0.0 may take longer due to the fact that all data bases will need to be migrated
- Not all Unicode characters will be displayed correctly by older operating systems. The exact scope of supported characters is dependent upon the language pack and the Windows system in use
- Not all editors are compatible with Unicode or support Unicode characters
- From version dog 7.0.0 onward, interface files will be generated using UTF-16. Old scripts that are not compatible need to be configured accordingly

List of what's new in this major release 7.0.0

New features & enhancements

- **Removal of processor usage limitations for Firebird database server**
- **version dog now available in simplified Chinese**
- **Enhanced user management (additional group details displayed)**
- **EULA updated (USA)**

- **Internationalisation (Unicode)**
- **Integration of AUVESY Image Service***  
- **Configuration of base version comments now possible in Global settings**
- **Maximum character length for comments and changes increased to 7500**
- **Multiple line commentary for Scripting and AutoCheckIn**
- **Improvements to FTP upload (select up to 10 directories)**
- **Improvements to UNC upload (select up to 10 directories)**
- **Improved performance of component overview**
- **Check for new versiondog version in AdminClient (requires internet connection)**
- **Proxy configuration**
- **Each version now has its own unique ID provided via Export Module and versiondog Scripting**
- **Improved check at server start (check if the server archive and the server are using the same version)**
- **Improved setup**
Improved runtime detection
- **versiondog server**
Improved server restart behaviour and improved diagnostics
- **Improved behaviour when switching to/from daylight saving**
- **Optimised memory use when comparing S7 projects**
- **Optimised server synchronisation**
Renewed synchronisation of components now possible, even if components were deleted in the synchronisation target
Improved adherence of synchronisation paths during synchronisation

* two-month trial license

New in system and device integration

Eaton CoDeSys 3 integrated

FactoryTalk View 10 integrated

GE Proficy Machine Edition V9.5 integrated

Heidenhain Upload integrated**

RSLogix 5000 V32 integrated

Scalance XC208 integrated

Schneider Unity 13.1 integrated

Wonderware System Platform 2017 integrated

New "Project" field in Job configuration for switches

Improvements to ASCII comparator

** done by AUVESY at request

Improvements to Drive Snapshot

- Mandatory fields added to Drive Snapshot job
- Fixed an issue for Drive Snapshot upload: where using the parameter -L caused SN<N> files to not be deleted

Improvements to Sick comparator

Exclusion of additional actual values

Improvements to KUKA upload class (see tutorials: [Kuka KR C2](#) und [Kuka KR C4](#))

- Improved error message
- Improved logic for upload and compare (ZIP, ASZ, WVS and RDC)
- Improved Job configuration

Improved support for GE Proficy Machine

- Compare configuration for GE Proficy Jobs
- Bug fixes

Improved support for Siemens TIA Portal

- Improved comparison of safety blocks
- Please note that if the directory structure is not correct the TIA Station upload will not work
- Readme.txt optimised for Supplier Check-Out
- TIA Station upload: ET200 support
- Also possible to check devices via "Checksum compare only"
- Possible to carry out a station upload for TIA Portal without a selected device
- Improved comparison display of projects located in subdirectories
- TIA 15 and 15.1 project opens with the correct editor
- Elements below the NCU are not factored in

Improved support for Wonderware System Platform

- Increased timeout duration
- Export objects before creating a version
- Improved WWSP integration for the complete Galaxy (CAB)

Improved support for WORD comparator

Increased stability


SINUMERIK Operate plug-in for MyHMI 4.8

Acronis upload class (see [tutorial](#))

Upload class versiondog component 

New in add-ons

versiondog MobileApp

QR codes can now be configured for a directory in the project tree 

Issues resolved: 7.0.2

The following points have been addressed in this update:

- Fixed an issue known to occur during Check-In/Check-Out if the computer name was long and contained Unicode characters
 - Improvements to station upload for TIA Openness. HW related F-blocks require an identical set-up language (the language that was present at the time of the download) in the project in order to carry out a station upload.
 - Fixed an issue where certain project data was not correctly read from the S7 upload
 - Fixed an issue for Siemens TIA Portal
 - Fixed an issue for RSLogix 5000
 - Improvements to AUVESY Image Service
 - Improvements to data bank migration for versiondog update
 - Optimisation of the compatibility between Windows XP and the AUVESY Image Service
 - Optimisation of the display of error messages in the user interface
 - Warnings concerning lack of free disk space on Windows partitions are ignored
 - AdminClient doesn't crash on executing a job for AUVESY Image Service anymore
 - AUVESY Image Service: Optimisation of the Service Installer
 - AUVESY Image Service: Remote Installer deletes temporary data after the installation
 - Missing snapshot.exe has been added to the Setup
 - Fix of the error during the reading of the project data of a S7-upload
 - Fix of the crash during the analyse of a TIA-Portal project
-

Issues resolved: 7.0.1

The following points have been addressed in this update:

- Updates to AUVESY Image Service
 - Improvement to databank migration (upload)
 - Fix for KUKA KRC4 checkbox in jobs
 - Fix for RSLogix 5000 when displaying special characters in path
 - Fix for component overview in UserClient
 - Fix for component detail display after duplication of component in UserClient
 - Fix for job results display for jobs produced before versiondog 4.0
 - Improvement to VDogScheduler
 - Fix for WinCC Flexible (error message when creating a version)
 - Fix for scripting checksum
 - Improvement to example files
 - Fix for AdminClient rights per component type
-

Issues resolved: 7.0.0

The following points have been addressed in this update:

- Fixed a crash issue which may occur when an import is carried out via the Active Directory
- Fixed a crash issue which may occur when two PCS7 libraries are compared
- Fixed an issue where an email was not sent warning that the maximum amount of available storage space had been reached
- Breadcrumb: Fixed an issue in which the path was not displayed properly after the filter function was used
- Fixed an issue where checking out FactoryTalk View SE (local station) projects may end in an error
- Fixed an issue where Simatic S7 project data was not readable (Windows 7 Japanese language version)
- Fixed an issue where the automatic email may block job execution
- Fixed an issue where SEW upload may cause problems when unexpected progress windows in SEW Motion Studio appear
- TwinCat V3: Fixed an issue where having two projects in one component lead to the error message "Access denied"
- RSLogix 5000: Fixed an issue where signatures were displayed in Signed Integer format instead of in hexadecimal format
- Parallel server:
 - Fixed an issue where a locked component may not always be synchronised during Check-In
 - Fixed an issue where the action of moving a component may not be synchronised on the partner server
- Schneider Concept:
 - Fixed an issue where spaces in LadderLogic networks were not correctly displayed in Concept

- Sick Scanner:
 - Fixed an issue where changes to a parameter lead to the error message "Not present" during a comparison
 - Fixed an issue where temporary directories may not be reliably emptied
 - Breadcrumb: Fixed an issue where a path may not be correctly displayed when filter settings are added
 - Fixed a security issue in SSH upload
 - KISTLER upload: Fixed an issue where the password was visible in the error message
 - Fixed translation errors
 - Fixed an issue where erroneous behaviour may occur during CheckInCheckOut server when a component is renamed
 - Fixed an issue that may cause Sick compare to crash
 - Fixed an issue where a BATCH file started instead opened to be edited
 - Fixed an issue that affected the CSV import for users using Unicode characters
 - Fixed a bug that impacted the B&R Automation comparator
 - Improved error message for SCALANCE Switch upload
-

New in version dog 6.5.0 (November 2018)

Highlights

- Single Sign-On
- STARTTLS or TLS for emails sent from version dog server
- Support for TIA Portal 15.1
- New report in WebClient: Job list

Full list of what's new in this major release:

New features & enhancements

General

- Single Sign-On
You now have the option to sign in to version dog using Single Sign-On
- Email security
Emails can now be encrypted via SMTP using STARTTLS or TLS
- Server configuration
The server address will now be filled in by default with the configuration name
Connection test is only possible when all parameters have been filled in
- Logging of IP address and computer name on Check-In and Check-Out
- The lock state of a component can now be directly changed via the component overview
- There is now a group role for every AdminClient module in user management
- Disk images can be directly stored on an FTP server
- XML comparison from version 5.5 has been brought back

New in system & device support

TIA Portal 15.1 Openness

- Station upload of a S7 1500
- Open password protected projects using username and password
- Provide CPU password in job configuration
- Use IP address from a device project or manually entry of IP address when different from project
- Warning if a secure flag was removed

TIA Portal

- Optimised memory use when opening large projects

Wonderware system platform

- Upload via GRAccess (upload tool no longer required)
- Improved error handling

B&R Automation Studio

- Upload time-out increased

versiondog SINUMERIK plug-in

- versiondog Sinumerik plug-in is now compatible with older versiondog Sinumerik plug-ins
As a user, you will receive a notification that an older version is in use and will be strongly advised to update.

New in add-ons

WebClient versiondog

- New report "Job list" displays complete list of all jobs and details including the results of the last job execution
- Change history can be limited to a certain time period
- Optimised CSV-Export. Empty monitor lines are ignored

versiondog MobileApp

- versiondog MobileApp supports DataMatrix codes
- versiondog MobileApp now supports IOS 12

Issues resolved: 6.5.0

The following points have been addressed in this update:

- Jobs appearing as edited although no change has been made
- Job configuration not updated when the component type is changed
- The sort function in the archive manager enables you to sort the columns in ascending or descending order
- SQL exception in case of wrong server configuration and login
- Dialog "Change password" always shows the wait cursor
- Change history/ Component details: working directory is elided too soon
- Performance improvement: progress display in AdminClient can be activated or deactivated at click of a button
- TIA Portal: incorrect display of IO Link configuration
- TIA Portal: comparison running in "Out of memory"
- TIA Portal: endless loop when identifying devices
- RSLogix compare: "Internal exception"
- Schneider Unity: open editors closed without prior warning
- CSV export: monitors are exported as empty rows
- After completing word comparison, UserClient stays in the background
- Setting "Release for use" is not synchronised between servers
- 125% resolution> line not present in job configuration

Update: 6.5.1 (November 2018)

The following points were addressed in this update:

Wonderware System Platform

- Automation object export from Galaxy
 - Automation export of complete Galaxy
-

Update: 6.5.2 (March 2019)

The following points have been dealt with:

- RSLogix issues solved
 - GE Proficy Machine Edition issues solved
 - TIA Portal improved
 - a. Checksum comparison no longer needs to be started as an application in TIA Portal
 - b. Version recognition 15 and 15.1 and opening projects now uses the correct editor
 - c. Unknown error 21103 in TIA Portal resolved. Umlauts (ö,ü,ä) in project names
 - d. Optimised error messages when no device has been selected for Station Upload
 - e. Field **device** for Station Upload available
 - Undesired behaviour occurring during Check-In and Check-Out while using a remote archive if the following take place at the same time: renaming of components with different capital and lower cases, and repeated disruptions to the network connection
 - Possible buffer overflow through interaction with network scanners
 - Support for Factory TalkView 10
 - Optimised handling for Factory TalkView SE
 - Optimised ASCII comparison: differences in *.py differences are found
-

New in version dog 6.0.0 (Juli 2018)

Highlights:

- Integration of **Beckhoff TwinCat 3.0**
- Support for **Wonderware System Platform**
- **versiondog MobileApp** (for iOS and Android)
- WebClient: graphical display of compare results
- Compliant with European GDPR requirements
- Support for Phoenix Contact MGuard routers

Full list of what's new in this major release:

New features & enhancements

General

- Usability improvements in UserClient
- Bug fixes and optimisation in job configuration
- General security enhancements

New in system & device support

Adobe PDF

- Performance update

ASCII

- Performance update
- Optimised display of comparison

B&R Automation

- Optimisation

BECKHOFF TwinCAT 3.0

- Support for upload and compare

Drive Snapshot

- Enter the PsExec software in use
- Configure additional parameters

GE Proficy Machine v9.5

- Support for upload and compare

Kistler maXYmos

- Optimised upload
- Implemented restore function
- Updated component type to reduce the occurrence of errors during the upload process

Mitsubishi GXWorks 2

- Performance update

Phoenix Contact MGuard routers

- Upload support

Schneider Unity

- Bug fixes in job execution
- Resolved problems with display in compare
- Integration of Schneider Unity Pro v13 (upload and compare)

Siemens SIMATIC PCS7

- Integration of version 9.0 SP1

Siemens TIA Portal

- TIA library comparison logic
- SmartCompare I/O Link configuration

- Optimised display
- Integration of TIA V15 projects

WinCC Pro 14 SP1

- Optimisation
- Integration WinCC flexible 2008 SP5

Wonderware System Platform

- Support for upload and compare

XML

- Comparison display optimised
- Support for all file sizes
- Support for not well-formed XML files

New in add-ons

versiondog Export Module

- Tags are available in the XML Export file

versiondog Legato interface

- Bug fixing

Update: 6.0.0.35882 (August 2018)

The following points have been addressed in this update:

- Difference detection issue for textual comparison (ASCII) fixed
 - Erroneous display of IO-Link configuration file in TIA Portal comparison fixed
-

New in version dog 5.5.0 (November 2017)

Highlights:

- Integration of **SINUMERIK Operate** without Siemens Integrate Server
- Display of differences on mobile devices
- Display of differences in the WebClient
- Display of **SEW** hardware lists in Factory Floor Status
- Support for **Rockwell Automation FactoryTalk View**
- Support for **Allen Bradley Stratix switches**
- Upload for **Siemens SINAMICS** (inverters)
- Configurable custom buttons in the UserClient
- Execute jobs directly from the UserClient

Full list of what's new in this major release:

New features & enhancements

General

- User manual augmented
- When appropriate, the user can elect to disable the warning that used to appear if no version was checked into the server
- Improved visibility of lock state in the UserClient
- Improvements in job configuration: you no longer need to Check-In a version first before editing compare settings
- Improvements to job configuration: User rights also displayed to administrators who are not super-administrators
- Job results in UserClient now appear faster and are easier to see
- Usability improvements including numerous reworked labels, tooltips and error messages

- Security enhancements
- Performance improvements

Features

- Execute jobs directly from the UserClient
- Configurable custom buttons in the UserClient
- Support for multiple domain groups for binding to Active Directory

WebClient

- Display of individual differences in the WebClient

Mobile devices

- Display of individual differences on mobile devices

AutoCheckIn

- Option to change component type when creating a version

Tagging

- Tags can no longer be created or modified when maintenance mode is active

New in system & device support

Allen Bradley Stratix switches

- Support for SmartCompare and upload

Atlas Copco tightening system controllers

- Improved comparison logic (exclusion of actual values)

B&R Automation

- Improved upload logic
- Improved comparison logic

Disk images

- Improved support for saving on remote shares (incremental backups possible, delete function)
- Backup now possible of PCs on which versiondog is not / cannot be installed

COGNEX Sensor

- Improved upload logic
- Improved comparison logic

Kistler

- Upload now possible via SCP (rather than via the less secure FTP)

Rockwell Automation FactoryTalk View

- Support for SmartCompare

RSLogix 5000

- Improved comparison logic

Schneider Unity:

- Integration of V12

Siemens SIMATIC PCS7

- Integration of Version 9

Siemens SIMATIC S7

- Improved upload logic
- Improved comparison logic

Siemens SCALANCE

- Integration of XB200 series
- Integration of W700 series
- Upload now only possible via SSH (the unsecure Telnet has been disabled)

Siemens SINAMICS (inverters)

- Support for upload

Siemens SINUMERIK Operate

- Integration of SINUMERIK Operate without Siemens Integrate Server

SSH

- Improved upload logic where there are large volumes of data

Siemens TIA Portal

- Improved upload logic
- Improved comparison logic

TwinCAT V2

- Improved comparison logic (support read passwords and write passwords)

WinCC

- Detail comparison now only carried out using Siemens certified process

Zenon

- Integration of 7.6

New in add-ons

versiondog Factory Floor Status

- Display of SEW hardware lists in Factory Floor Status

versiondog Export Module

- Export of component types
- Export of data from LibraryManagement
- Export of device data
- Export of users who are on the job list

versiondog Scripting

- Provision of user email addresses
- When creating a new version, the user is informed whether a Check-In is currently possible.

Update: 5.5.0.33877 (March 2018)

The following points have been addressed in this update:

- Not possible to create disk images with Drive SnapShot on Windows XP SP1 operating system
- Undesired behaviour sporadically occurred during the upload of some RSLogix 5000 device projects
- For some RSLogix 5000 projects, it was not possible to obtain "Equal" when comparing a version on the server with the program on the device
- Some GE PME device uploads resulted in an error
- For some GE PME projects, it was not possible to obtain "Equal" when comparing a version on the server with the program on the device
- Some SIMATIC S7 1200 and S7 1500 device uploads resulted in an error
- For some Siemens TIA portal projects, it was not possible to obtain "Equal" when comparing a version on the server with the program on the device
- Undesired behaviour sporadically occurred during the upload of Siemens SCALANCE switches

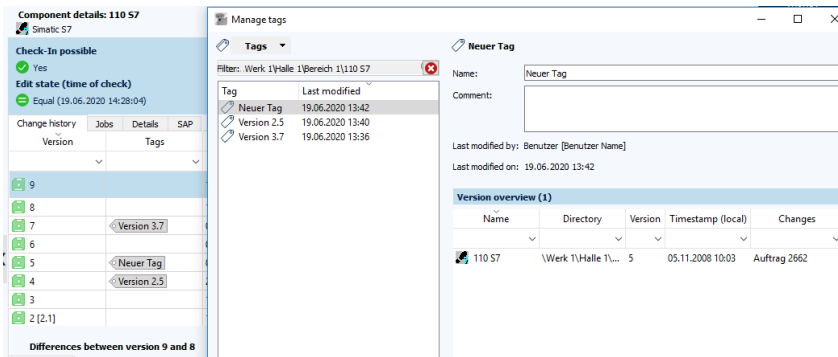
- Some Siemens PCS7 project comparisons resulted in an error
 - Optimisation of upload and compare for Siemens SINUMERIK Operate
 - Textual comparison of configuration data from Cognex DataMan barcode reading devices is once more possible (firmware version is 5.7 onward)
 - Siemens SINAMICS upload error fixed
 - For some SICK sensor projects, it was not possible to obtain "Equal" when comparing a version on the server with the program on the device
 - Improved use of resources by the server module "scheduler" and improved data integrity
 - Improved availability of the module "server synchronisation" in parallel servers
 - For some Windows systems, it was not possible to open the component log in the client
-

New in versiondog 5.0.0 (Juni 2017)

Highlights:

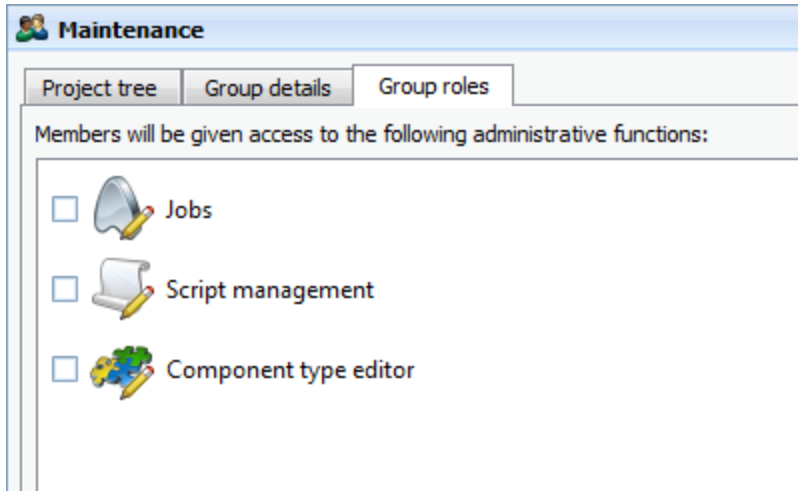
Tagging

- Assign a collective name to versions of different components for a group of projects that will be delivered together in a single release
- Mark individual versions to make it easier to navigate to them



New user rights level giving access to individual AdminClient modules

- Give user groups access rights to just job configuration, script management or the component type editor
- Protect the versiondog system



Links can be entered in version comments

- Put hyperlinks in version change reasons and comments
- Share information more efficiently

The screenshot shows the 'Change history' table in the software interface. The table has columns for Version, Tags, Username, Timestamp (local), and Change reason (global). The table shows a list of version changes, with the most recent one (version 8) having a hyperlink in the change reason column.

Version	Tags	Username	Timestamp (local)	Change reason (global)
8		VersionDog [Super...]	12.05.2017 13:30:39	https://intranet/mantis/...
7		Glaser [Robert Glaser]	05.11.2008 10:57:19	Auftrag 2531 Inbetriebnahmestand optimiert
6		VersionDog [Super...]	05.11.2008 10:22:49	Auftrag 2662 Maschinenmodule erzeugt
5		VersionDog [Super...]	05.11.2008 10:03:33	Auftrag 2662 Fehlerbehebung
4		Huber [Edwin Huber]	21.10.2008 12:04:35	Auftrag 34562
3		Huber [Edwin Huber]	16.10.2008 12:46:01	Change Request6746837...
2 [2.1]		Glaser [Robert Glaser]	15.10.2008 22:14:34	Change Request678688rd
1		Wissing [Dieter Wis...]	15.10.2008 18:20:03	aus dem Backup KW 34 ...

Improved display of component details

Component log redesigned

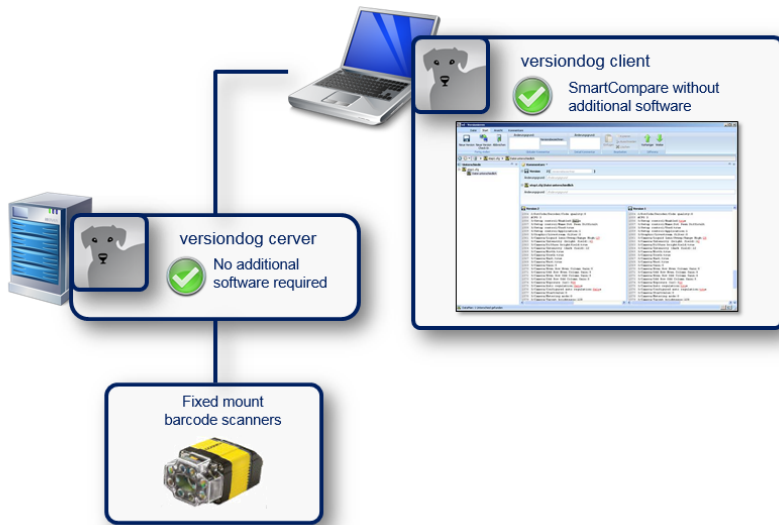
- Filter for any text
- Get the overview you want thanks to enhanced column filters
- Clearly see renamed or moved components with the aid of new component ID column

The screenshot displays the redesigned Component log interface. The main window shows a table with columns for Timestamp, Directory, Component name, Component type, Command, Username, and Computer name. The table contains various log entries with their respective details. Overlaid on the main window are three dialog boxes:

- Filter...**: A dialog box with a search input field and a 'Filter' button.
- Version timestamp**: A dialog box with a 'Last' dropdown set to '2' days, and 'From' and 'To' date and time pickers. The 'From' date is set to 02.01.2017 00:00 and the 'To' date is 02.01.2017 23:59.
- Command**: A dialog box with a list of commands and checkboxes. The list includes: Check-In, Check-In fehlgeschlagen, Check-In, Komponente verschoben, Check-Out, Check-Out fehlgeschlagen, für andere Benutzer gesperrt, Check-Out, für andere Benutzer gesperrt, Komponente gelöscht, Sperrestatus aufheben, Version, and Select all.

SmartCompare for COGNEX DataMan

- Get detailed comparisons of DataMan configurations
- Schedule automatic backups and be ready for fast disaster recovery



Full list of what's new in this major release:

New features & enhancements

General

- Improved appearance of text in GUI when upscaled
- Security enhancements
- Improvements to web server
- Issue fix: Improved rendering of table rows and columns when printing differences
- Issue fix: Uniform handling of different forms of copying from server to local when client settings specify automatic application of lock state and comment with minimum length
- Issue fix: Rights cleared for deleted components
- Issue fix: If "Show server directories" is not selected then only locally present components are checked out (when a directory is selected)
- Approved for Windows Server 2016
- Usability improvements including numerous reworked labels, tooltips and error messages
- Performance improvements
- User manual augmented

Features

- Tagging
- Additional user rights level to allow user groups access to certain modules of the AdminClient
- Links can be entered in version annotations (clickable from change history pane)
- Lost network connections automatically restored
- "New in versiondog" button in client applications
- Reason given if maintenance mode cannot be activated
- User can choose to make passwords visible as they are entered
- Display of component details redesigned for more clarity

- Usability harmonised with regard to deletion of different types of element (components, component types, jobs, users, ...)
- Italian added to user interface languages

Component log

- Component log redesigned
- New column header filters
- Text filter
- Component ID displayed
- Performance improvements

AutoCheckOut

- Improvements and enhancements to AutoCheckOut
- Ability to apply a lock state with comment on AutoCheckOut
- Issue fix: AutoCheckOut where there are standard libraries referenced
- AutoCheckOut a particular version

New in system & device support

Atlas Copco tightening system controllers

- Automatic backup

B&R

- Upload support for version 4.x
- Improved upload logic
- Improved comparison logic

CODESYS

- Support for ELAU projects
- Improved comparison logic
- Setting available to exclude comments from comparison
- Usernames and passwords can now be assigned for CODESYS V3

COPA-DATA zenon

- Support for version 7.5

COGNEX DataMan

- Detailed comparison of DataMan configurations
- Improved comparison logic

FANUC CNC

- Comparator configuration available
- Improved comparison logic
- Improved upload logic

KUKA robots

- Upload configurable in "Job configuration"

RSLogix 5

- Issue fix: versiondog error codes 31102 and 20002 (on comparison)

RSLogix 500

- Support for version 11

RSLogix 5000

- Support for version 30
- Improved usability when excluding the current values of variables in the comparator configuration
- Improved display of "EventTag"

Schneider Unity

- Support for version 10

SEW Motion Studio

- Support for version 6.10.1
- Support for version 6.20
- Improved comparison logic

SICK Scanners

- Improved comparison logic

Siemens TIA

- Support for version 13 SP2
- Support for version 14
- Support for version 14 SP1
- Improved comparison logic
- Issue fix: SCL source code now correctly displayed

Siemens Switches

- Upload support for X300

Siemens Simatic S5

- Issue fix: Echochange with PLC Header

Siemens Simatic S7

- AWL (Structured Task List) sources no longer compared as standard
- Improved comparison logic
- Improved display
- Display of LAD now shows symbol comments

Siemens PCS7

- Support for version 8.2
- Improved display of LAD networks
- Improved comparison logic
- Improved display

PC images

- PC disk image upload now configurable in "Job configuration"
- Performance improvements when restoring a backup

Microsoft Office

- Support for Excel 2016
- Enhanced comparison for graphic object in Excel
- Support for Word 2016
- Improved comparator logic (charts)

Wonderware System Platform (Archestra)

- Automatic backup

New in add-ons

versiondog Factory Floor Status

- Siemens IO Control Panels shown in S7 MLFB overview
- Individual devices can now be excluded from Factory Floor Status

versiondog Export Module

- Export of the period of time that a component has been checked out with a lock state
- Export of users and user groups

versiondog parallel server

- Improved logic for VdogParallelsServerUtil.exe
- Improved synchronisation of log entries

versiondog Scripting

- BeforeRestore: Restoration can be prevented using a script
- AfterCheckOutS: Provision of information about the lock state

versiondog Agents

- Caching of comparison results

versiondog LibraryManagement

- Option to ignore SCL compiler comments and titles
- Support for S7 SFCs

Update: 5.0.0.31159 (August 2017)

The following points have been addressed in this update:

- TIA Portal comparison error fixed
- Improved XML comparison
- Improved KUKA comparison
- Improved AtlasCopco comparison

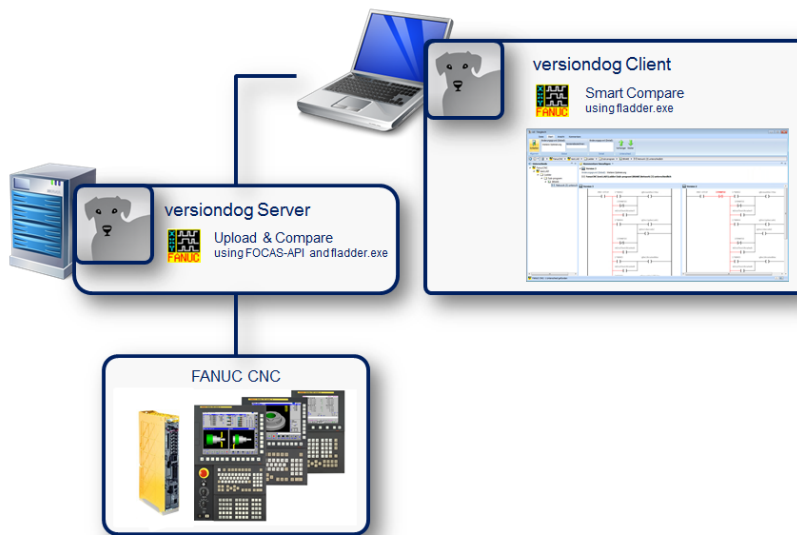
- Improved WinCC comparison
 - Improved RSLogix5000 comparison
 - Improved RSLogix500 comparison
 - Improved RSLogix5 comparison
 - Improved Cognex DataMan upload
 - Improved B&R Automation upload
 - Improved TIA Portal upload
 - Optimised opening of the component log in the UserClient
 - Optimised navigation in the UserClient
 - Optimised synchronisation of the user management with AD
 - Optimised server side communication
-

New in versiondog 4.5.0 (November 2016)

Highlights:

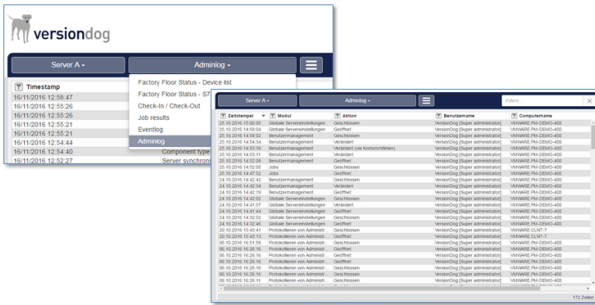
Integration of FANUC CNCs

- Detail comparison for projects configured using the FANUC CNC development environment
- Automated backup for disaster recovery



AdminClient logging reports available in the WebClient*

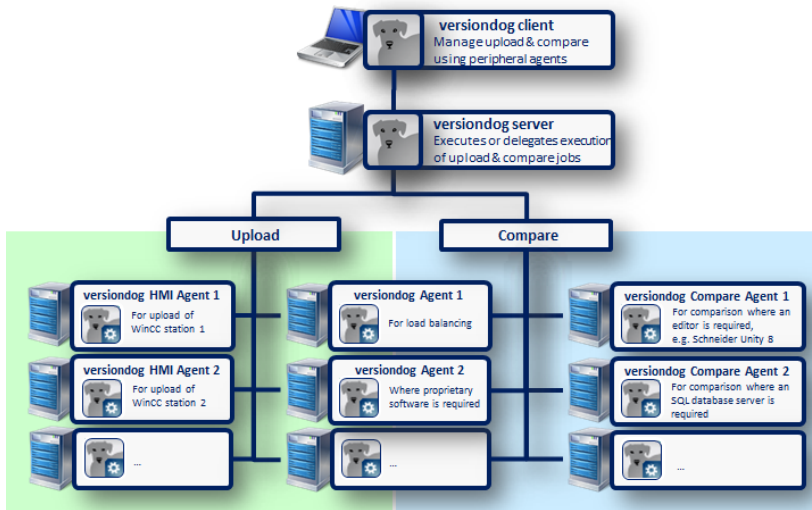
- New report in the WebClient
- Track changes made in the AdminClient:
 - Who opened which module in the versiondog AdminClient and when?
 - Who has made changes and when?



*Included in versiondog GxP Edition, optional add-on at extra cost in versiondog Standard Edition

Compare agents for client PCs (client agents)**

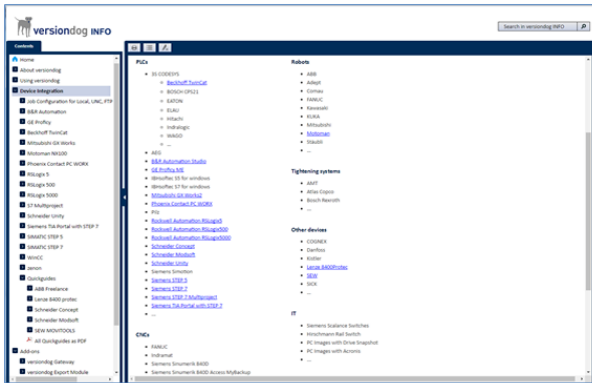
- Select compare agents (for comparisons that run on the client PC) from the UserClient
- Reduce the number of editors that need to be installed (and continually updated) on client PCs



**Optional add-on at extra cost

versiondog INFO

- Recent additions to the versiondog INFO online/offline documentation and tutorial platform:
 - Installation requirements
 - versiondog Gateway
 - Beckhoff TwinCat
 - GE Proficy ME
 - Siemens STEP 5
 - ...



To access versiondog INFO, go to: auvesy.com > my versiondog > versiondog INFO

Full list of what's new in this major release:

New features & enhancements

General

- Capslock alert on login
- Local data alerts when closing UserClient
- "Do not show again" option for insufficient rights warnings
- Ability to set recipients for system notifications
- Check-In view in EasyClient always possible
- Master data updated on AutoCheckIn
- Create base version via AutoCheckIn
- Setup and SmartUpdate optimised (re. handling of T_COMPONENTTYPES.FDB, additional user rights checks, notifications and checks)
- Optimised navigation to next/previous difference
- Performance improvements
- Inclusion of deleted components in component log
- Who activated maintenance mode now shown
- File manager now opens after copying version / backup to directory
- Check-In/Check-Out dialog further optimised
- Check-In progress display improved
- Additional Supplier Check-Out features (multiple components, opening of file manager)
- User management: Sort user/group tree according to full name
- Issue fix: Improved deletion of multiple users
- Issue fix: Improved master service start-up to avoid sporadic error messages in the eventlog
- Issue fix: Erroneous shortcuts in translation
- Issue fix: Deleted Quicksaves no longer shown in Manage Quicksaves
- Issue fix: WebClient first loads current entries before displaying

- Qt 5.6.1
- Firebird 2.5.3.26780
- Usability improvements including numerous reworked labels, tooltips and error messages
- User manual augmented

Jobs & job configuration

- Wildcards can now be used in text filter
- Agent configuration improved
- Improved configuration of job scheduling and execution
- Improved pop-up closing behaviour
- Issue fix: Edited jobs remain in visible area
- Improved filtering by upload type
- Differentiation between "not compared" and "not present" in job results
- Component lock state included in job notification

New in system & device support

3S CODESYS

- Comparison for CODESYS 3.x projects

ADOBE PDF

- Optimised comparison logic
- Improved performance

B&R Automation Studio

- Support for version 4.2
- Support for version 4.2.5

COGNEX InSight

- Automatic backup

FANUC CNC

- Integration of FANUC CNCs

GE Proficy ME

- Support for version 9.0

Mitsubishi GX Works 2

- Support for version 1.54.2

Rockwell Automation RSLogix 500

- Support for version 10

Rockwell Automation RSLogix 5000

- Support for version 29

Schneider Unity

- Support for version 10
- Support for version 11
- Support for version 11.1

SEW Motion Studio

- Support for version 6.10.1
- Support for version 6.20

Siemens PCS7

- Support for version 8.2

Siemens TIA

- Optimised upload logic
- Improved error messages

Siemens WinCC

- Support for version 7.4

New in add-ons

versiondog Factory Floor Status

- Forced value monitoring for RSLogix 5000
- Forced value monitoring for Schneider Unity
- Forced value monitoring for GE Proficy
- Timestamp column in device overview

versiondog Export Module

- Export now handles quotation marks in comments / change reasons

GxP

- AdminClient logging enhanced for server settings and component type editor
- AdminClient logging reports available in the WebClient*

versiondog parallel server

- Optimised logic when saving large number of jobs
- Optimised logic for VdogParallelserviceUtil.exe
- Optimised synchronisation of job results

versiondog LibraryManagement

- UserClient opens at currently selected component

versiondog Scripting

- Scripting interface for "AfterCreateComponent"
- Update master data via "ChangeCheck"

versiondog Upload & Compare Agents

- Compare agents for client PCs (client agents)**

New in documentation & information

versiondog INFO

- Installation requirements
- versiondog Gateway
- Beckhoff TwinCat
- GE Proficy ME
- Siemens STEP 5

*Included in versiondog GxP Edition, optional add-on at extra cost in versiondog Standard Edition

**Optional add-on at extra cost

Update: 4.5.0.26851 (December 2017)

The following points have been addressed in this update:

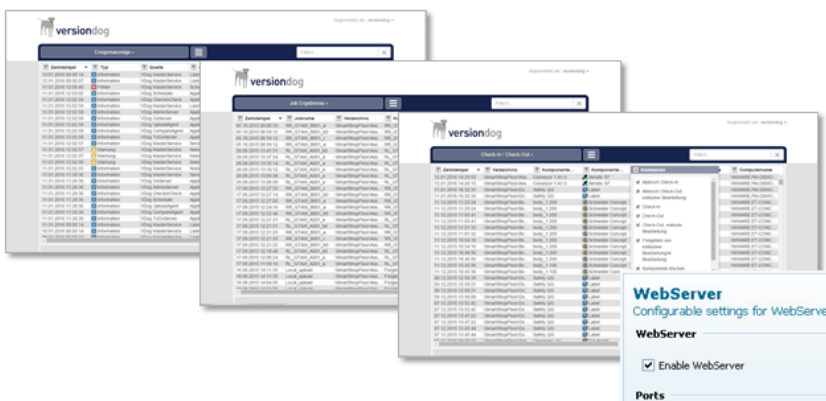
- Improved user-rights check in the versiondog setup
 - Improved comparison of S7 safety programs
 - TIA device detection error fixed
 - Performance optimisation for Intel RAID C600 controllers
 - Improved Scalance X300 upload
 - Improved Schneider Unity upload
 - Optimisation of the Compare Agent
-

New in versiondog 4.0.0 (July 2016)

Highlights:

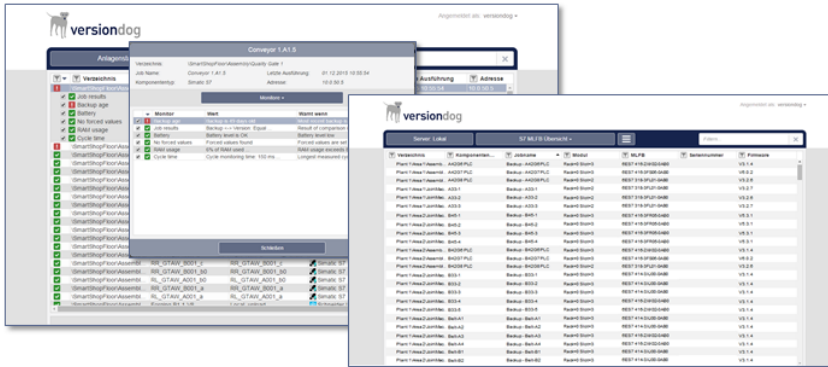
versiondog WebClient

- Reports and information displayed in web browser
- Option to download all reports as CSV files directly
- versiondog WebClient is easily activated by enabling the WebServer in the AdminClient



versiondog Factory Floor Status*

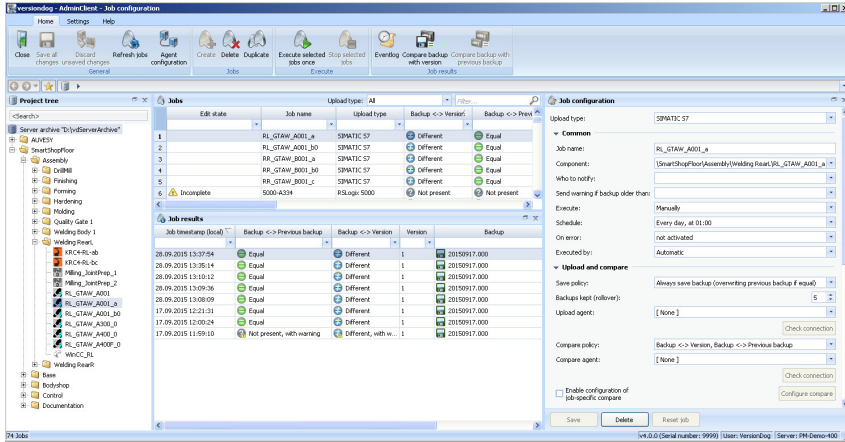
- Award-winning new add-on
- Monitor devices and technologies supported by versiondog and display their status (green/yellow/red) in your web browser
- Additional features for S7:
 - Battery status display, alerts when forced values are set, current group errors, RAM usage, cycle time and much more
 - MLFB browser with firmware overview



*Optional add-on at extra cost

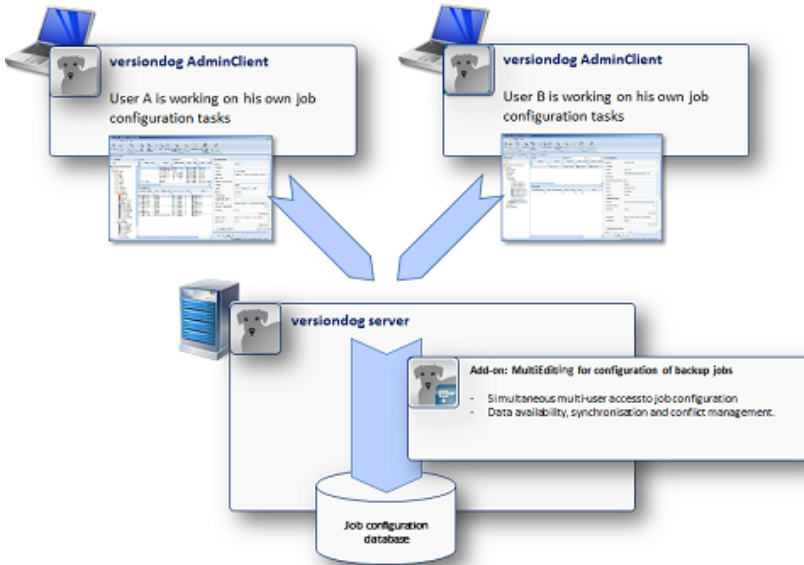
Redesigned job configuration

- Improved usability
- Optimised performance
- E-mail notification to groups
- Display of whether a job is assigned to the BackupClient
- Reminder function for re-executing a job
- Option to assign a standard upload type for various component types
- Configurable timeout for each upload type
- Connection check with agents
- Reworked multi-selection
- Option to copy a job to other components
- More log information in job results (upload via agent, connection method used, ...)



MultiEditing for configuration of backup jobs*

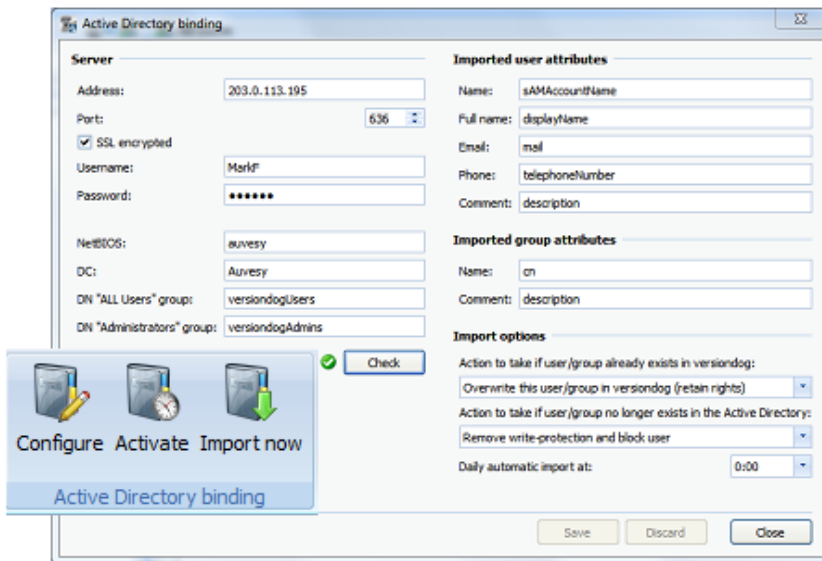
- Allows multiple users to edit the job configuration simultaneously



*Optional add-on at extra cost

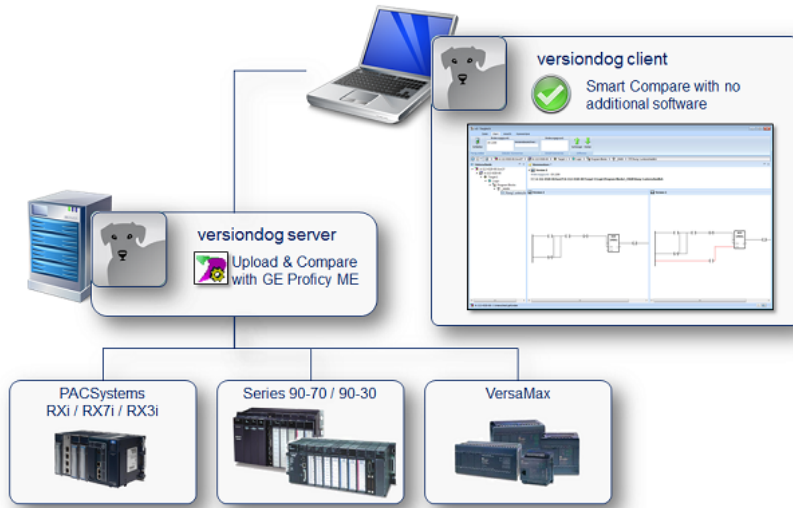
Automatic synchronisation with Active Directory

- Automatic synchronisation of users and groups from the Active Directory
- Automatic import of user properties (name, e-mail, comments etc.) to versiondog user management



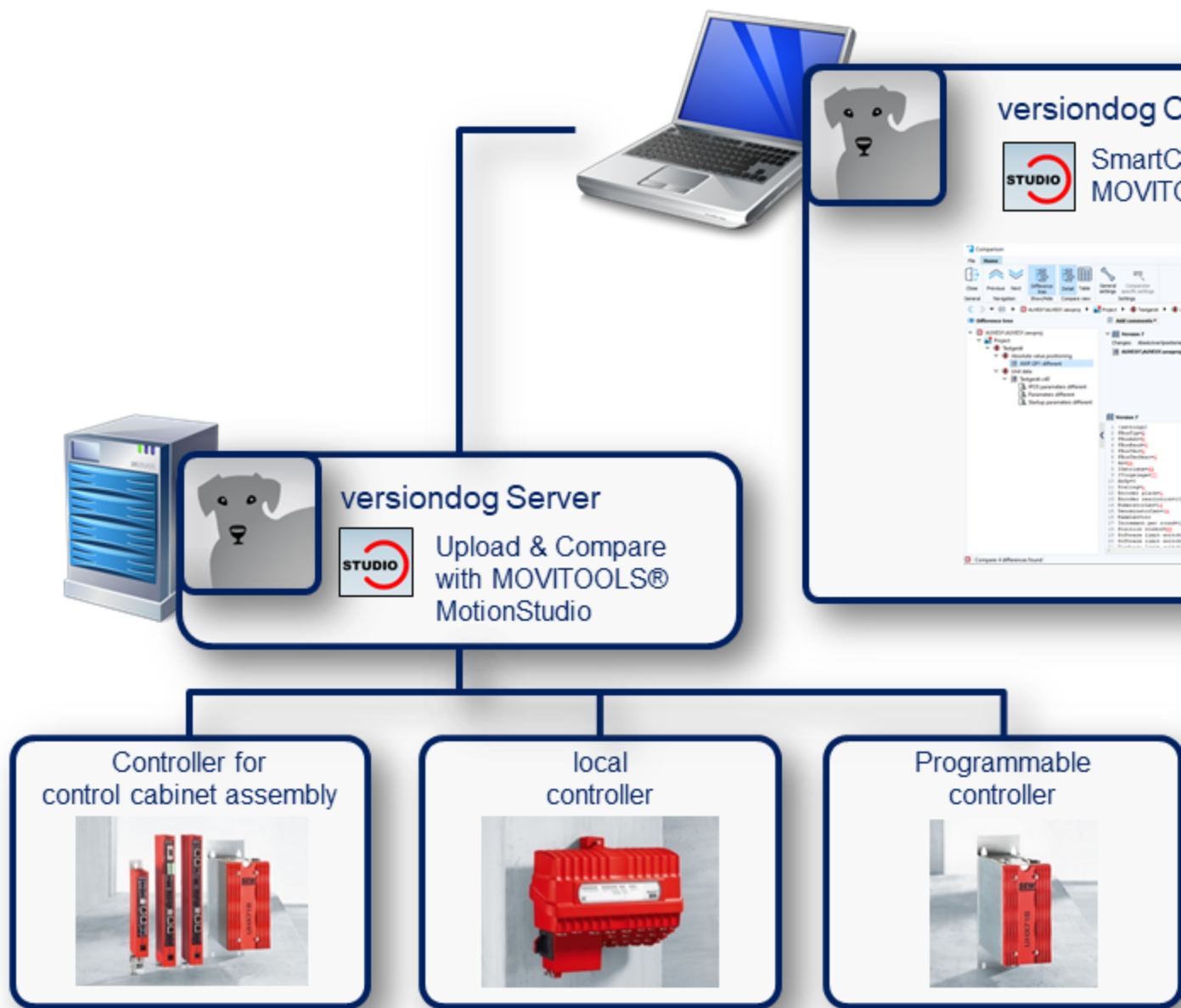
Support for GE Proficy Machine Edition

- Detail comparison for projects configured using the Proficy Machine Edition development environment
- Automated backup for disaster recovery



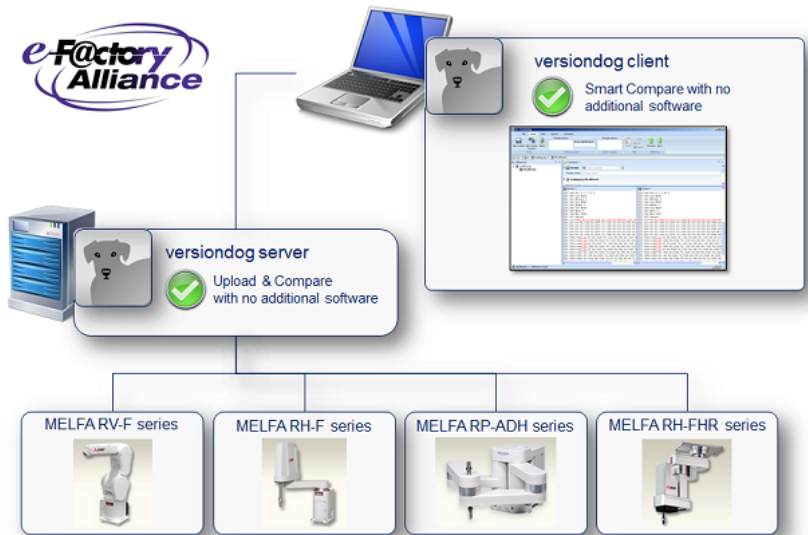
Support for SEW inverters

- Detail comparison for projects configured using the MOVITOOLS development environment
- Automated data backup for disaster recovery



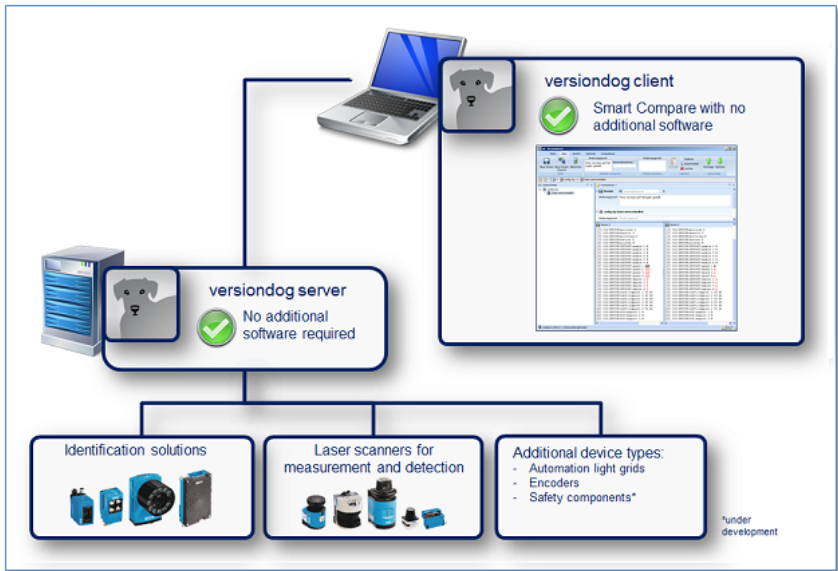
Support for Mitsubishi MELFA industrial robots

- Detail comparison for program files and controller data
- Automated data backup for disaster recovery



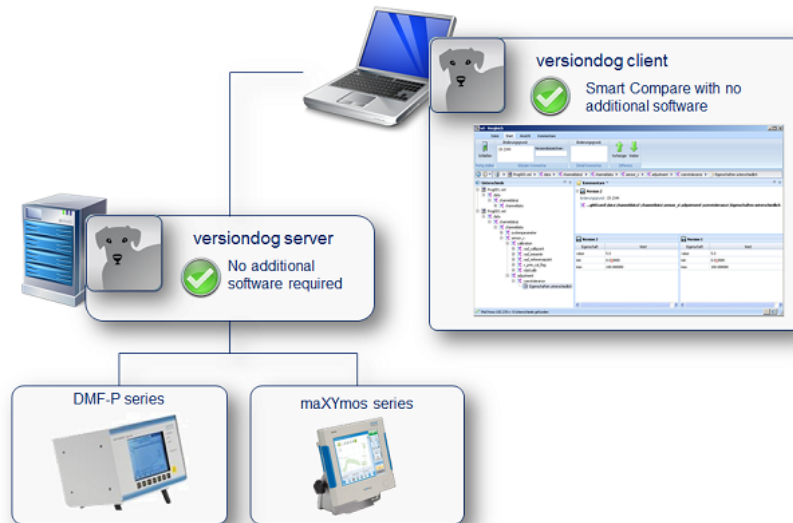
Support for SICK scanners

- Detail comparison for projects configured using the SOPAS ET development environment
- Automated backup for disaster recovery



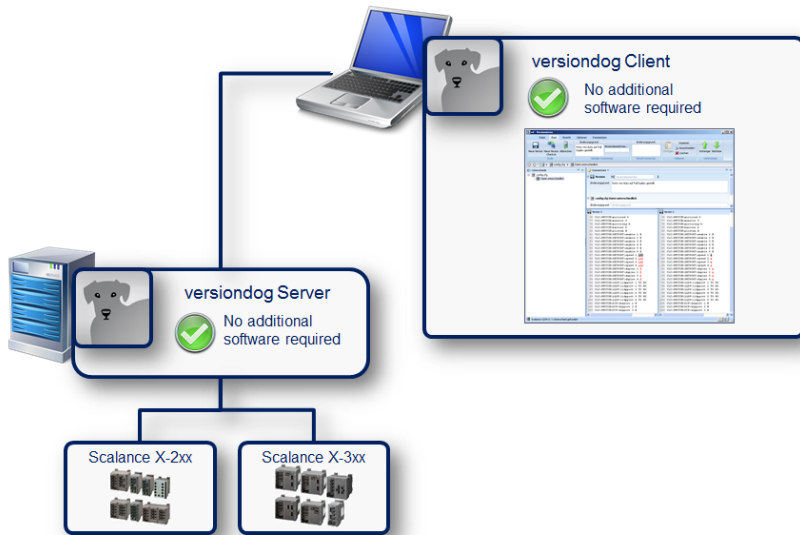
Support for Kistler process monitors

- Detail comparison for parameterisation and firmware states
- Automated backup for disaster recovery



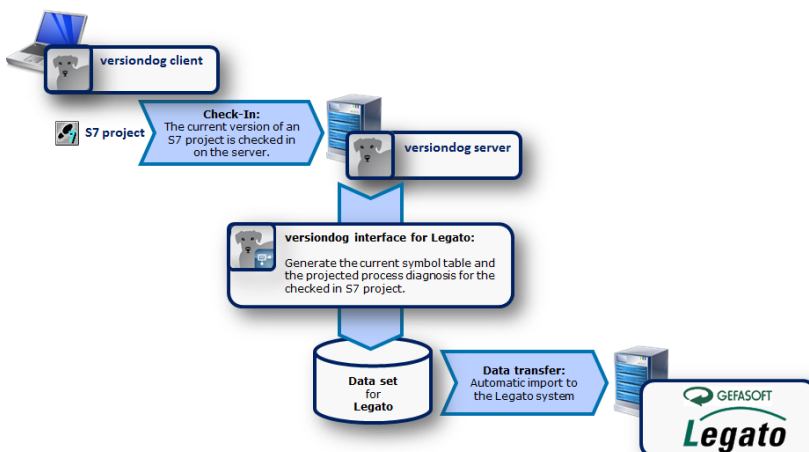
Support for SCALANCE switches

- Detail comparison of switch configuration
- Automated backup for disaster recovery



versiondog Legato Interface for S7*

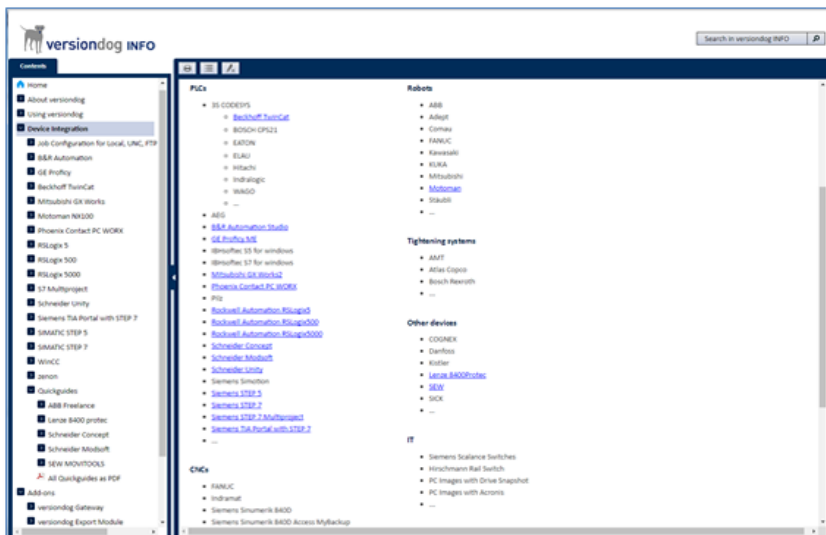
- Generation of symbol table and projected process diagnosis for S7 projects
- Automated data exchange between versiondog and Legato after a new version is checked in to the server
- Works with all versions of the configuration environment (SIMATIC Manager)



*Optional add-on at extra cost

versiondog INFO

- Recent additions to the versiondog INFO online/offline documentation and tutorial platform:
 - BackupClient basics
 - Active Directory binding
 - versiondog Factory Floor Status
 - versiondog Upload & Compare agents
 - versiondog LibraryManagement
 - ...
- Context-sensitive help accessed by pressing F1 in versiondog 4.0, even when offline



Full list of what's new in this major release:

New features & enhancements

General

- versiondog WebClient
- Redesigned job configuration

Comparator UI

- Automatic focus on graphical differences with buttons to switch to next/previous difference
- Zoom function in comparator UI using mouse wheel
- Ability to move comparator UI by holding Ctrl key and dragging with mouse
- Optimised print version of comparator UI
- Improved visualisation of differences
- Option to only show differences in graphical comparison

Change history

- Option to delete individual versions from the change history
- Display of newer versions on the server

Administration

- Automatic import of users, user properties and groups from the Active Directory to the versiondog user management
- Maintenance mode shown on dashboard
- Automatic maintenance mode with notifications of insufficient RAM / too many sync tasks
- Improvements to maintenance mode
- Archive manager optimised
- Optimised CSV import/export process in user management
- Only the username "versiondog" (super administrator) can change their own password
- Domain entries can now contain a dot (.)

Others

- Revised Check-In/Check-Out reports
- Improved usability during Check-In/Check-Out process
- New workflow for overwriting local changes during Check-Out
- Check for new versions on server before making changes
- Merging of "Check-Out" and "Check-Out (take selection)" buttons into one
- Master data displayed in Check-In/Check-Out report
- License expiry date clearly visible in "Licensing" module
- Optimised logic for displaying the edit state of a component
- Silent server update
- Warning when password is entered with Caps Lock activated
- Option to reset column sorting
- Optimised print version
- Optimised memory management in the server archive
- Revised labels, tooltips and error messages
- F1 help in the EasyClient
- Context-sensitive help
- Revised manual
- Issue fix: Rollback following unsuccessful installation
- Issue fix: Updating of master data in the EasyClient
- Issue fix: Executing an 006 ToDo

New in system & device support

GE Proficy ME

- Support for GE Proficy Machine Edition

SEW inverters

- Support for SEW inverters

Mitsubishi MELFA

- Support for Mitsubishi MELFA industrial robots

SICK Scanners

- Support for SICK Scanners

Kistler process monitors

- Support for Kistler process monitors

SCALANCE switches

- Support for SCALANCE switches

General: INI comparator

- Issue fix: Crashing when handling large files

General: FTP upload

- Issue fix: Access to drives with an FTP server

General: SSH upload

- Issue fix: Navigation in SSH directory browser

General: UNC upload

- Increased timeout duration
- Issue fix: Upload also possible without username and password

General: XML comparator

- Improved comparator logic
- Improved display

Adobe PDF

- Change detection in attached files

3S CODESYS

- Optimised comparator logic

- Enhanced comparison graphics

ABB robots

- Upload class available

B&R Automation Studio

- Support for version 4.2.xxx
- Optimised comparator logic
- Enhanced comparison graphics
- Optimised 64-bit compatibility
- Upload for B&R visualisation systems possible via FTP

COGNEX Dataman

- Support (level 1) for automated backups without comparisons

COPA-DATA zenon

- Optimised comparator logic

GE iFIX

- Free comparison

Microsoft Excel

- Comparison of macros
- Detection of embedded images
- Optimised comparator logic

Microsoft Word

- Optimised Word comparisons in a job

Mitsubishi GX Works2

- Optimised comparator logic
- Enhancements to project tree

Schneider Electric CitectSCADA

- Support for version 7.50

Schneider Electric Concept

- Graphical comparison

Schneider Electric Unity

- Graphical comparison
- Optimised comparator logic

Schneider Electric Wonderware InTouch

- Support for version V11.1 system platform 2014 R2

Siemens PCS7

- Option to exclude plans (CFC and SFC) from the comparison
- Optimised comparator logic
- Enhanced comparison graphics

Siemens S7

- Configurable comparison for absolute or symbolic addressing
- Job configuration: Option to configure CPU password
- Job configuration: Identification of the slot from the S7 project
- Sorting and filtering of S7 program folders in the dialog "S7 program path"
- Optimised comparator logic
- Enhanced comparison graphics
- Optimisation for comparing Simotion parameter sets
- Fixed: UserClient unresponsive when SIMATIC Manager is open
- Fixed: View mode saved in SIMATIC Manager

Siemens Sinumerik 840D

- Optimised upload logic

Siemens TIA

- Optimised comparator logic
- Optimised upload logic

Siemens WinCC

- New upload configuration
- Optimised comparator logic

Siemens WinCC flexible

- Optimised comparator logic

Rockwell Automation RSLogix 5

- Support for version 8
- Exclusion of program name from online/offline comparison
- Optimised comparator logic

Rockwell Automation RSLogix 500

- Exclusion of program name from online/offline comparison

Rockwell Automation RSLogix 5000

- Support for version 27
- Support for version 28
- Graphical display of FBB/SFC
- Optimised display of program tags and controller tags
- Optimised comparator logic
- Enhanced comparison graphics
- Issue fix: Termination of RSLogix instance

New in add-ons

Factory Floor Status*

- Monitor devices and technologies supported by versiondog and display their status

(green/yellow/red) in your web browser

MultiEditing*

- Job configuration by multiple users simultaneously

versiondog Legato Interface*

- Automated data exchange between versiondog and Legato

versiondog Export Module

- New report for all jobs where a difference had been detected when compared with the version checked in on the server
- Enhanced "ComponentTree" report:
 - Optional output of all versions
 - Optional output of master data
 - Enhanced XML output for importing with Excel
- Enhanced "Joblist" report (formerly "JobConfiguration"):
 - Components for which no jobs are configured are also listed
 - New column "Out of date backup"
- Configurable timestamp output (UTC or local time)
- Notification of incorrect command line call

GxP

- Guaranteed adherence to two-person rule
- Traceability of two-person rule in Check-In/Check-Out report

versiondog parallel server

- Automatic maintenance mode if the number of sync ToDos exceeds the error limit
- Automatic maintenance mode if the value is less than the LoLo limit
- Optimised performance
- Optimised synchronisation logic (job deletion, scheduled tasks etc.)
- Display of server from which the job was executed

versiondog LibraryManagement

- Optimised performance
- Optimised behaviour when selecting a line during UI refresh
- Optimised detection of block versions
- Optimised scan logic
- Option to hide deleted versions
- Deletion of entries
- Content comparison for SCL sources
- Option to exclude program blocks and data blocks
- Optimised print version
- Revised tutorial

versiondog scripting

- Scripting interface for "BeforeServerSync" and "AfterServerSync"
- Scripting interface for "AfterCheckOutS"
- Activation request for scripting function
- Enhancements to the "Script management" module

New in documentation & information

versiondog INFO

- BackupClient Basics
- Binding to Active Directory
- versiondog Factory Floor Status
- versiondog Upload & Compare agents
- versiondog LibraryManagement

*Optional add-on at extra cost

Discontinued from versiondog 4.0.0 onward

- From version 4.0.0, Windows NT and Windows 2000 will no longer be supported.
Exceptions are:
 - versiondog Gateway
 - versiondog AutoCheckOut for NT (as workaround)
- From version 4.0.0, the option to install the shell extension will no longer be offered by the setup routine.
This is a preliminary step in removing the functionality completely. Documentation will be made available on how to subsequently install the shell extension in version 4.0.0 manually. Please contact support if you wish to request this documentation.
- From version 5.0.0, the shell extension will no longer be supported.

Update: 4.0.0.24072 (July 2016)

The following points have been addressed in this update:

- SmartUpdate does not always run successfully where the shell extension is installed
- If a component is deleted with a job, undesired behaviour can occur when sending status emails
- GE Proficy comparator improvements
- Resolution of the issues that causes the error message: "Error inserting asset state data [...]"

Update: 4.0.0.24244 (August 2016)

The following points have been addressed in this update:

- Improvements to "Factory Floor Status", including the exclusion of Siemens FM application modules when reading status information (due to the fact that, under certain circumstances, accessing these could cause a stop)

- Logic optimisation where "Check-Out always in lock state "Lock for other users"" has been pre-set by an administrator
 - S7 comparator improvements (symbolic addressing of DBs, checksums for S7 safety programmes)
 - Additional configuration possibilities for COGNEX uploads
 - Exclusion of help files from "Support Package"
-

Update: 4.0.0.24664 (August 2016)

The following points have been addressed in this update:

- Improvements for S7 and PCS7 with regard to:
 - Batch type comparisons
 - Large project comparisons
 - Opening multiple projects at the same time in Simatic Manager version 5.5.4.5
 - Hardware configuration comparisons
 - Hiding of differences in headings optimised
 - Enhancement for CSC Gateway: number of communication partners no longer limited
 - Upload fix for X320 Scalance switches
 - GE Proficy comparator improvements (Toolchest links)
 - Improvements to Factory Floor Status
 - Improved scheduler performance and resource utilisation
 - Help texts shown when configuring connection methods in job configuration
-